



# China's Development Finance to Africa: A Media Based Approach to Data Collection

Bradley Parks, Andreas Fuchs, Austin Strange, Axel Dreher,  
Michael Tierney, Vijaya Ramachandran,  
April 29, 2013



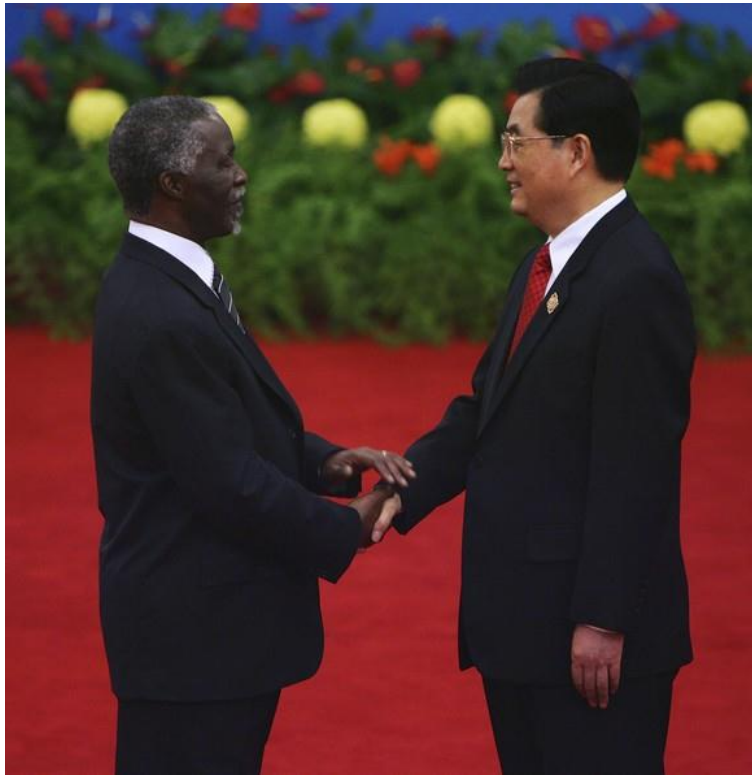
# What is AidData?

- AidData is a development research and innovation lab that **makes aid information** more **accessible** and **actionable**.

## What do we do?

- **Track** \$5.5 trillion dollars from **90+ DAC and non-DAC** development finance institutions
- **Geocode** and **crowdsource** aid information
- Conduct cutting-edge analysis on **aid distribution** and **impact**
- Create **decision support tools** for development finance institutions.

# The Changing Global Development Finance Architecture



- ❑ ODA from DAC donors: approx: **\$100-\$150 billion** a year (Source: OECD/AidData)
- ❑ ODA from Non-DAC donors: estimates vary widely from **\$11 billion to \$41.7 billion** a year (Source: Center for Global Development)
- ❑ Proportion of development finance from **non-DAC donor countries is growing**. Proportion from DAC countries is shrinking/leveling off.

*At the 2011 Busan summit, Chinese negotiators argued that “[the] principle of transparency should apply to north-south cooperation, but ... it should not be seen as a standard for south-south cooperation”*

- The Guardian, November 2011

# Previous Media-Based Data Collection Efforts

- ❑ Heavily reliant on sole-sourcing
- ❑ Insufficient attention to duplicate projects
- ❑ Mostly English language searching for projects
- ❑ Failure to “follow the money” from announcement to implementation led to over-counting
- ❑ Opaqueness of methods and sources
- ❑ Unable to make apples-to-apples comparisons with OECD-DAC donors because no systematic flow type coding scheme

# Cross-Checking Official and Media-Based Data

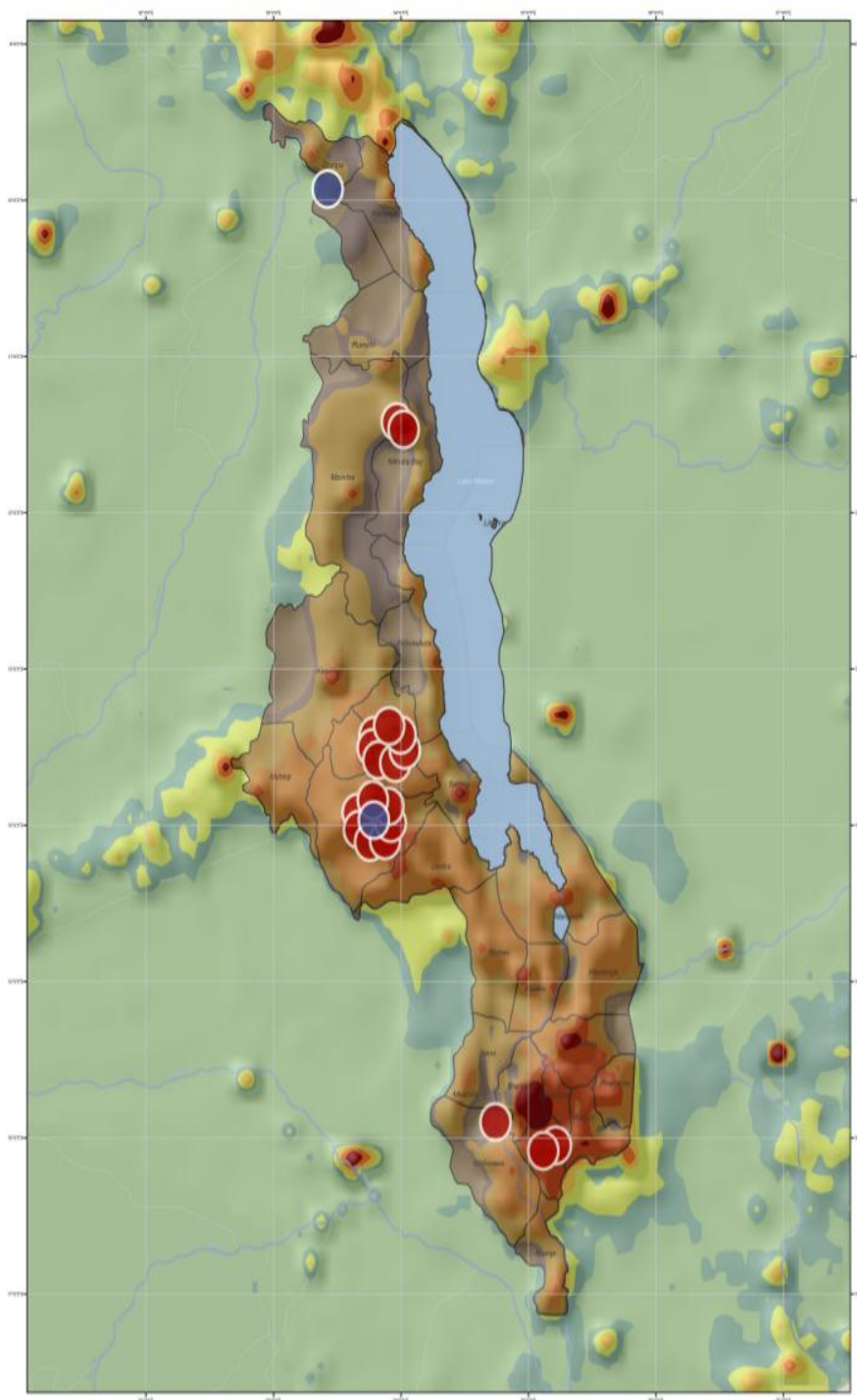
## Recipient-reported aid data

- ☐ 2 Commitments, 2000-2011
- ☐ \$133 mil

## Media-based aid data



- ☐ 16 Commitments, 2000-2011
- ☐ 9 with amounts, totaling \$297 mil

Title	Sector	Commitment
Karonga Chipita Highway	Infrastructure, Energy and Mining	\$ 70,000,000
National Stadium Construction	Trade, Tourism, Banking and Financial Services	\$ 65,000,000
Furniture and Vehicle Donation to Foreign Ministry	Government and Social Services	\$ 300,000
Construction of University of Science and Technology	Education	\$ 80,000,000
Two Secondary Schools	Education	\$ 10,000,000
Donations to Mzuzu University	Education	\$ 2,000,000
Kwacha Presidential Hotel	Trade, Tourism, Banking and Financial Services	\$ 63,000,000 (\$92,300,000 reported by media)
Construction of National Assembly Building	Government and Social Services	\$ 40,000,000
Fertilizer Donation	Agriculture, Fishing and Forestry	\$ 1,000,000



# CHINESE DEVELOPMENT FINANCE ACTIVITIES IN MALAWI, 2000-2011

## PROJECT LOCATIONS

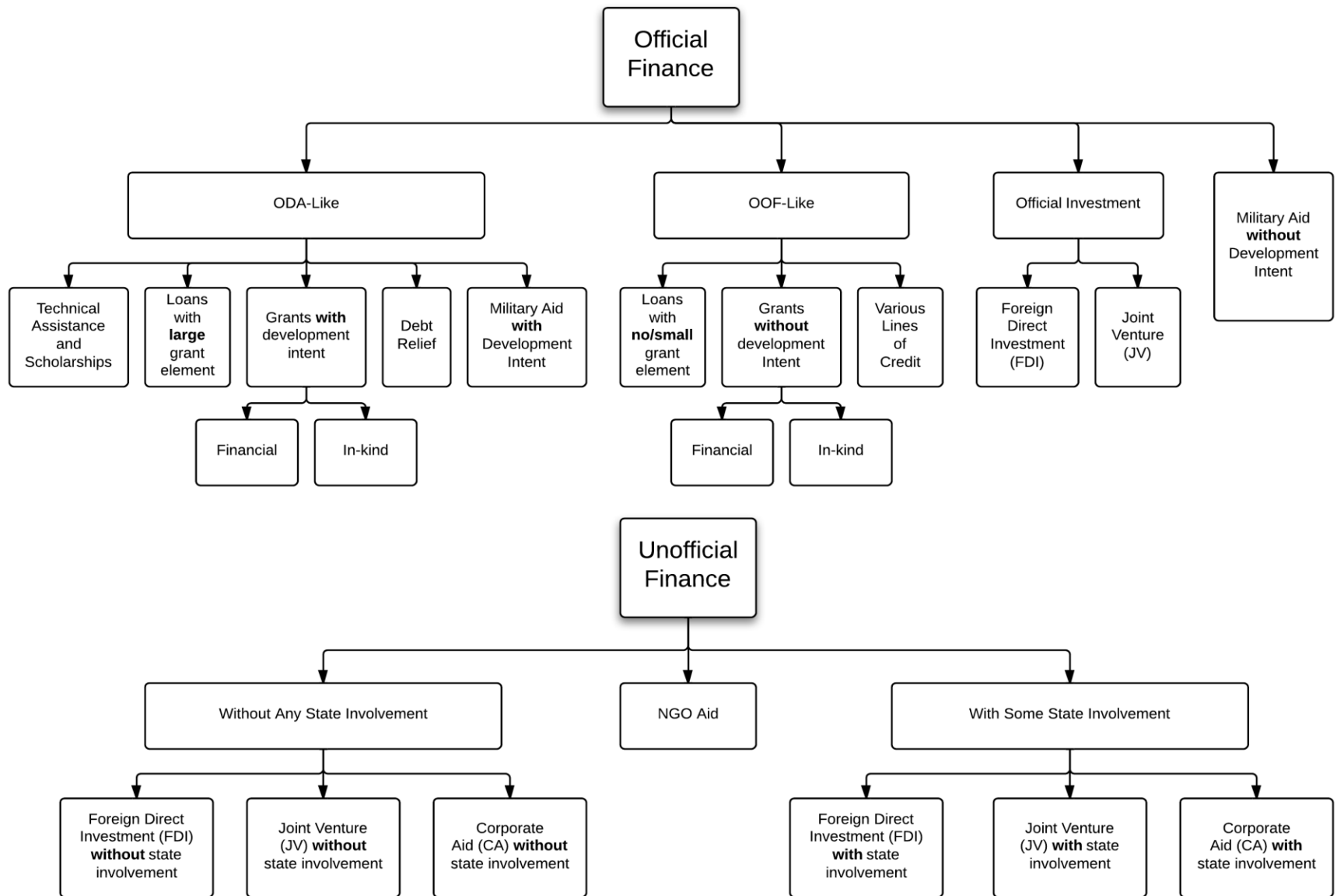
-  Reported to Malawi's Ministry of Finance
-  Uncovered by AidData through media-based methods

## POPULATION IN POVERTY

Persons per 100 sq.km.

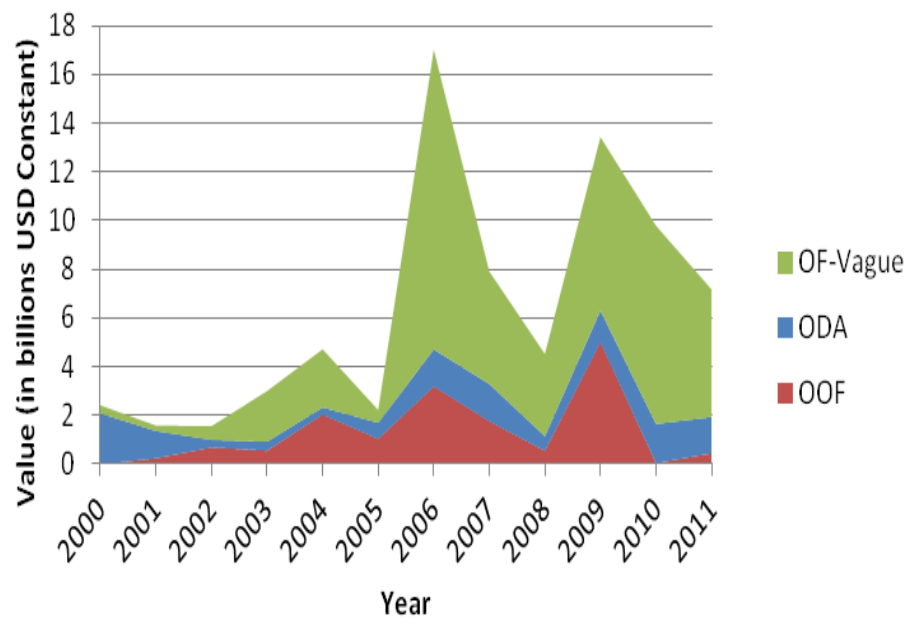


Project data geocoded by AidData. Population map built with *Harvest Choice* poverty and *AfriPop* population rasters. DEM and shapefiles accessed at USGS and Natural Earth. The coordinate system is CGS\_WGS\_1984. Map assembled by I.C.R. at AidData.

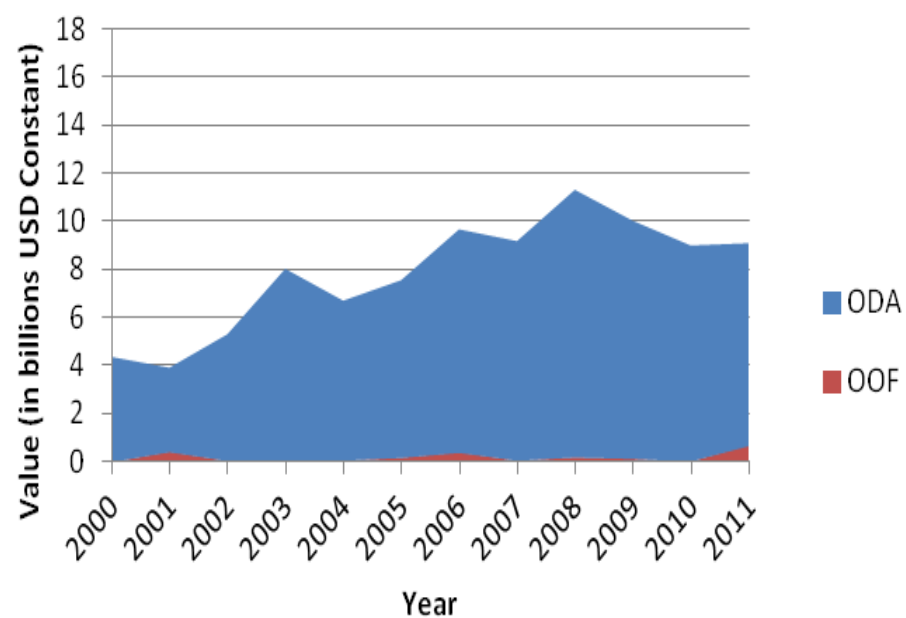


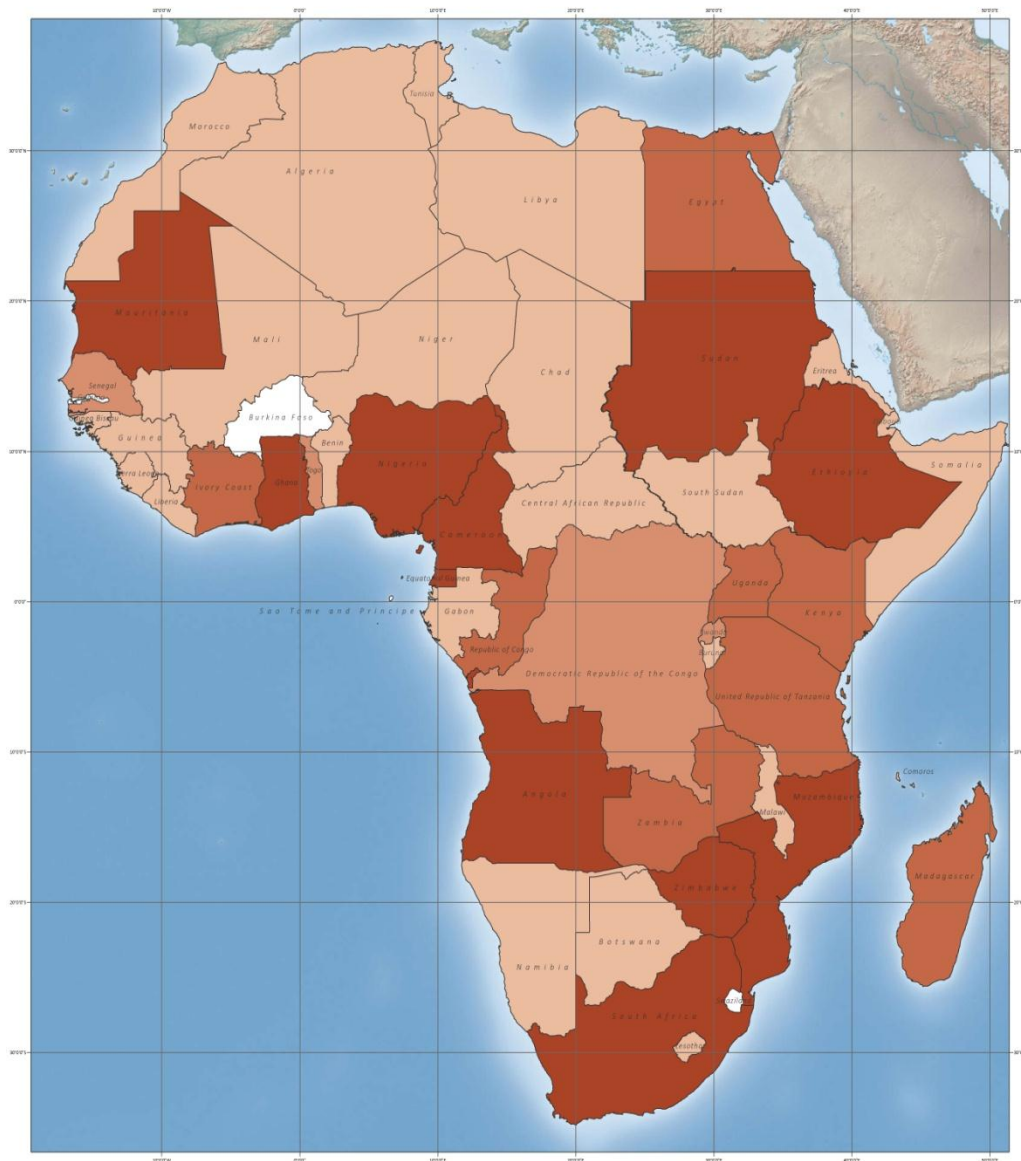


## Chinese Official Finance to Africa



## US Official Finance to Africa





## SHARE OF CHINA'S OFFICIAL FINANCE TO AFRICA, 2000-2011

3.0%+

1.0 - 3.0%

0.5 - 1.0%

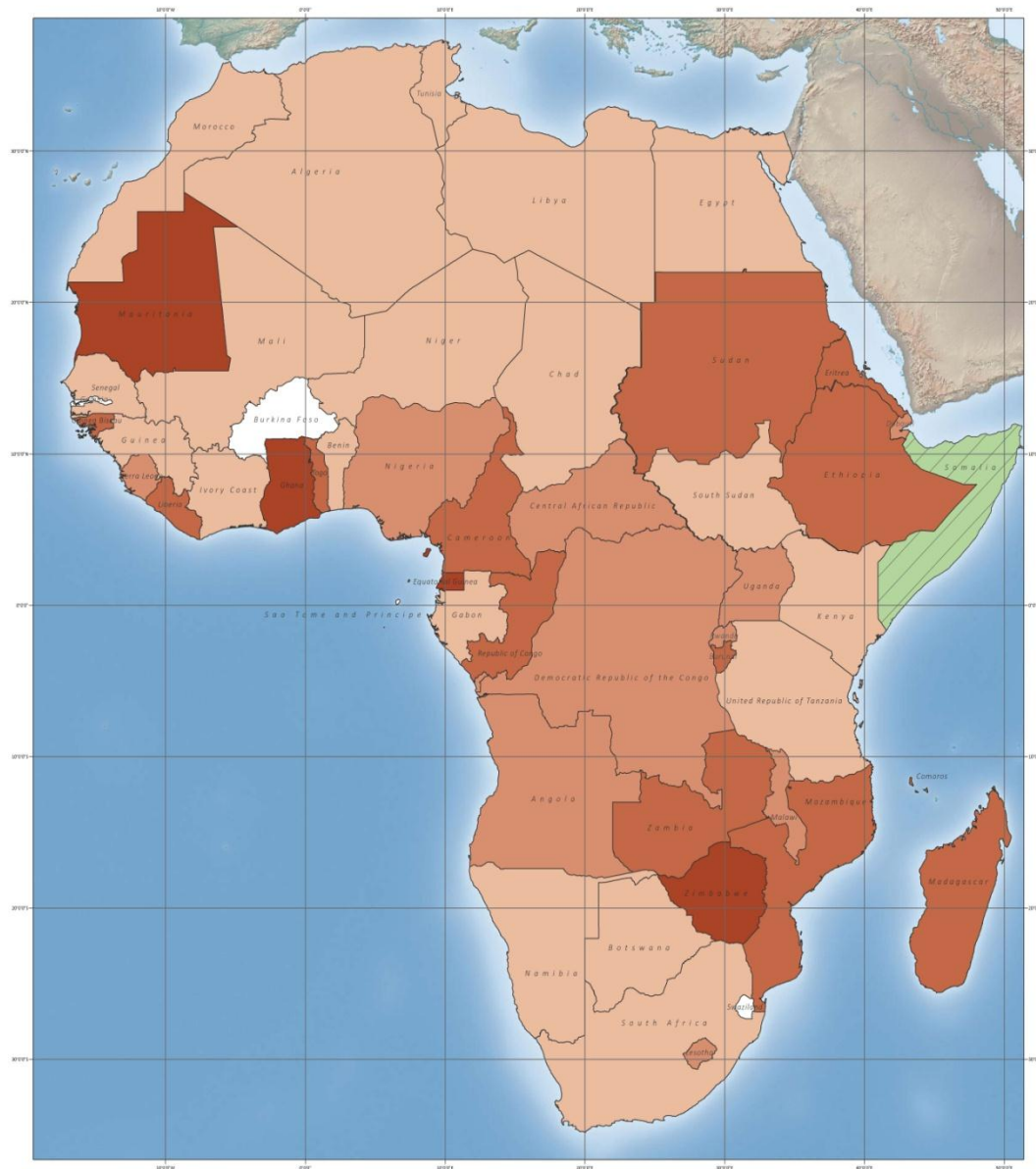
0.01 - 0.5%

0%

No Data

Map source data provided  
AidData. Shapefiles  
produced using Natural  
Earth and ESRI base maps.  
Map assembled by I.C.R.  
Coordinate system is GCS\_  
WGS\_84.

Algeria	0.18
Angola	5.68
Benin	0.08
Botswana	0.20
Burkina Faso	0.00
Burundi	0.23
Cameroon	4.10
Cape Verde	0.04
Central African Rep.	0.23
Chad	0.30
Comoros	0.10
Congo, Dem. Rep.	1.00
Congo, Rep.	2.61
Cote D'Ivoire	1.26
Djibouti	0.09
Egypt	1.97
Equatorial Guinea	5.15
Eritrea	0.49
Ethiopia	7.31
Gabon	0.30
Gambia	0.00
Ghana	15.61
Guinea	0.25
Guinea-Bissau	0.11
Kenya	1.77
Lesotho	0.17
Liberia	0.28
Libya	0.41
Madagascar	2.19
Malawi	0.45
Mali	0.37
Mauritania	6.31
Mauritius	1.84
Morocco	0.37
Mozambique	3.04
Namibia	0.29
Niger	0.29
Nigeria	11.53
Rwanda	0.53
Saint Helena	
Sao Tome and Principe	0.00
Senegal	0.60
Seychelles	0.16
Sierra Leone	0.15
Somalia	0.02
South Africa	3.18
South Sudan	0.04
Sudan	7.32
Swaziland	0.00
Tanzania	1.41
Togo	0.56
Tunisia	0.11
Uganda	1.13
Zambia	2.97
Zimbabwe	5.22



# CHINA'S OFFICIAL FINANCE AS A PERCENTAGE OF GNI, 2000-2011

3.0%+

1.0 - 3.0%

0.5 - 1.0%

0.01 - 0.5%

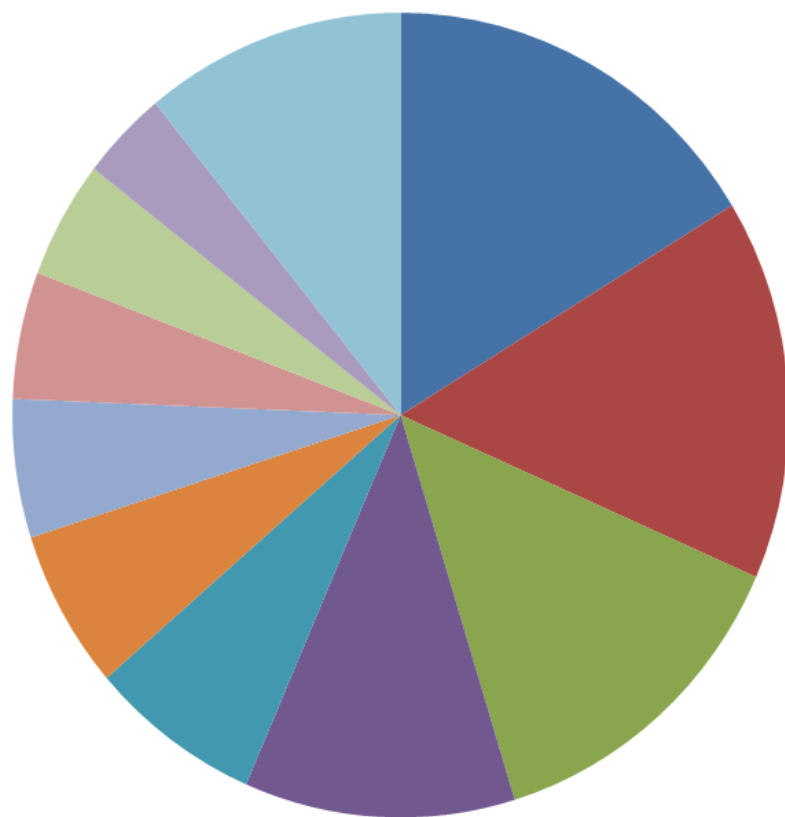
0%

No Data

Algeria	0.01
Angola	0.85
Benin	0.08
Botswana	0.10
Burkina Faso	0.00
Burundi	1.19
Cameroon	1.19
Cape Verde	0.20
Central African Rep.	0.77
Chad	0.36
Comoros	1.22
Congo, Dem. Rep.	0.64
Congo, Rep.	2.76
Cote D'Ivoire	0.37
Djibouti	0.53
Egypt	0.08
Equatorial Guinea	5.68
Eritrea	2.04
Ethiopia	2.27
Gabon	0.19
Gambia	0.00
Ghana	5.32
Guinea	0.35
Guinea-Bissau	1.05
Kenya	0.41
Lesotho	0.51
Liberia	2.57
Libya	0.04
Madagascar	1.72
Malawi	0.70
Mali	0.33
Mauritania	12.66
Mauritius	1.27
Morocco	0.03
Mozambique	2.28
Namibia	0.19
Niger	0.40
Nigeria	0.52
Rwanda	0.86
Saint Helena	0.00
Sao Tome and Principe	0.00
Senegal	0.33
Seychelles	0.95
Sierra Leone	0.54
Somalia	0.07
South Africa	0.03
South Sudan	1.20
Sudan	0.00
Swaziland	0.44
Tanzania	1.31
Togo	0.02
Tunisia	0.55
Uganda	1.92
Zambia	4.11
Zimbabwe	4.11

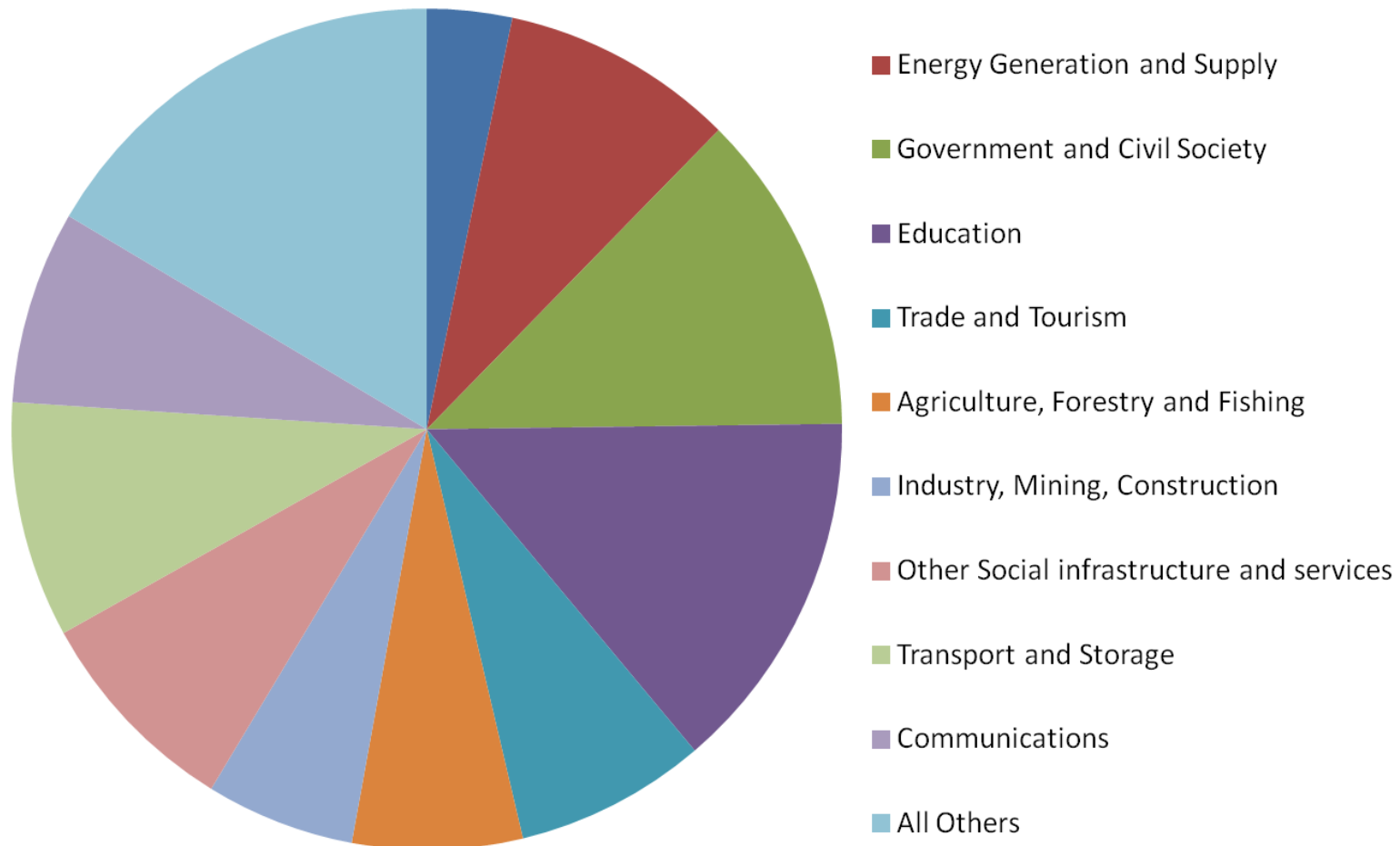
Map source data provided by AidData and World Development Indicators. Shapefiles produced using Natural Earth and ESRI base maps. Map assembled by I.C.R. Coordinate system is GCS\_WGS\_84.

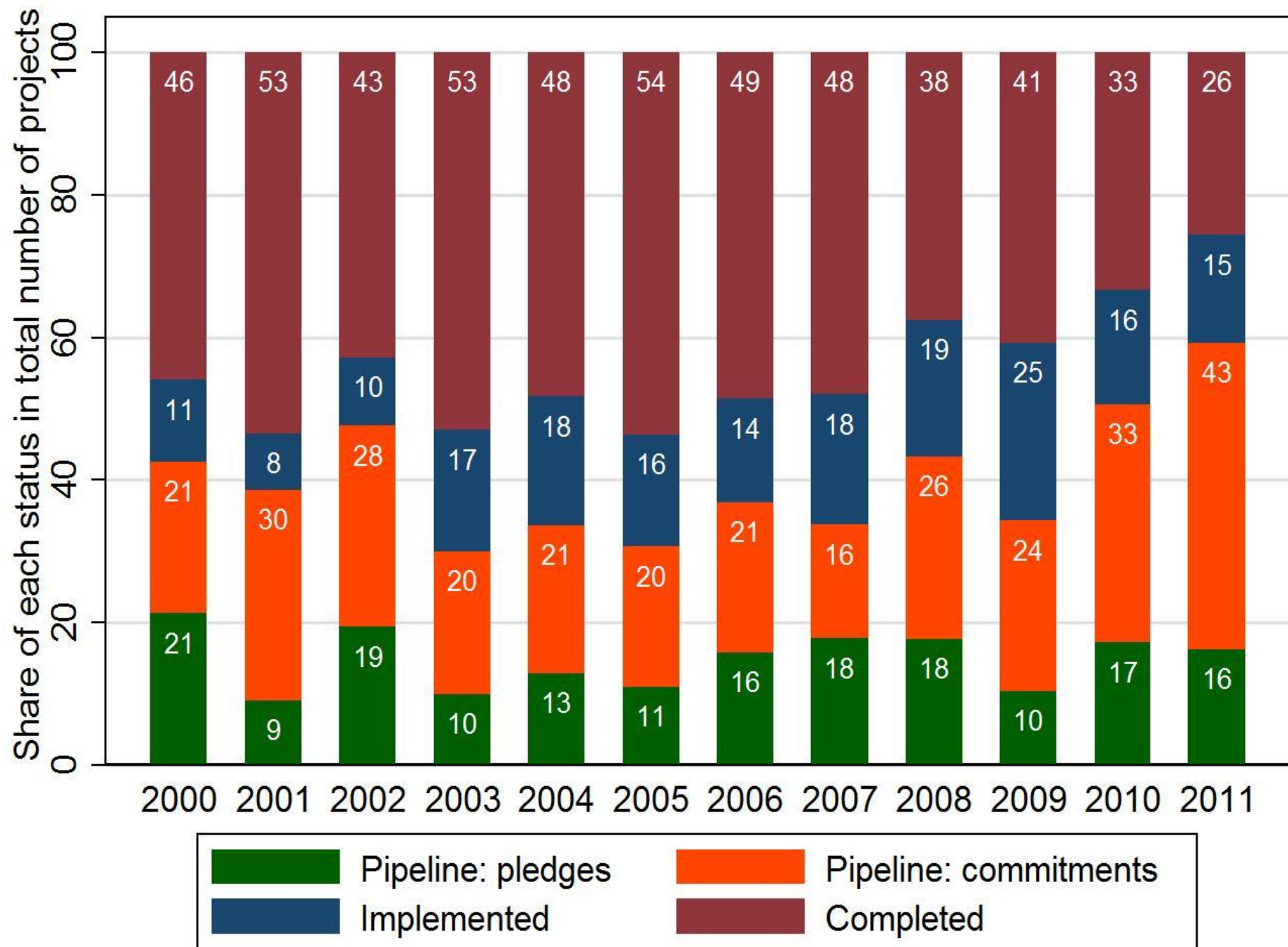
## Sectoral Distribution of Chinese ODA-Like Projects



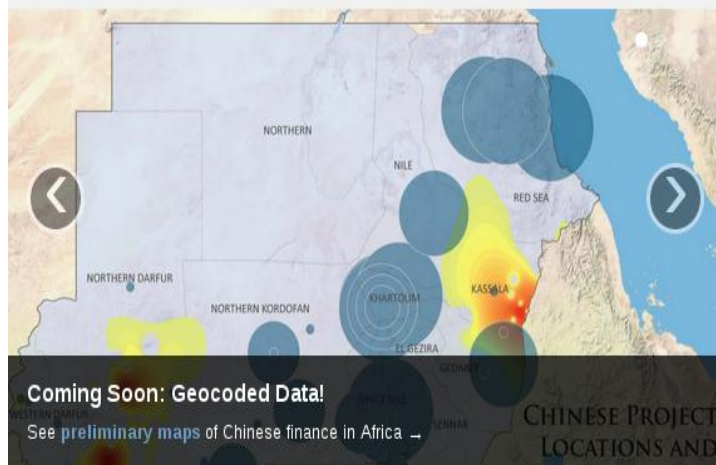
- Unallocated / Unspecified
- Health
- Government and Civil Society
- Education
- Agriculture, Forestry and Fishing
- Emergency Response
- Action Relating to Debt
- Other Social infrastructure and services
- Transport and Storage
- Communications
- All others

**Sectoral Distribution of Chinese OOF-Like Projects**









## Current Stats:

*Hover to see all stats*

Chinese **official finance projects**, 2000-2011: **1422**

## Recent Changes

*Hover to see all changes*

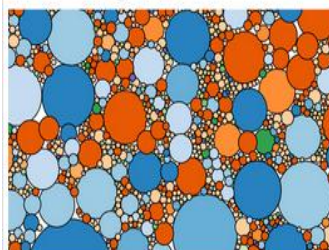
**Updated Project:** Donation to a Local Agriculture Group--Diversity Farm (DF)  
(\$130.35 to Liberia in 2010) **1 day ago**

HOW TO USE THE DATA

HELP US IMPROVE THE DATA

COMING SOON: GEOCODED DATA

See the Big Picture →



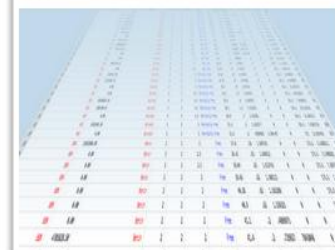
Country-Level Perspective →



Project-Level Data →



Download Data →



## In the News:

**China's Development Finance to Africa: A Media-Based Approach to Data Collection** – Center for Global

Development, about 10 hours ago

Thank you to China's aid to Africa

## Recent Tweets:

### Tweets

**tamaralevine** @tamaralevine

11m

## Publications:

Austin Strange, Brian O'Donnell, Daniel Gamboa, and Bradley Parks: **AidData's Media-Based Data Collection Methodology**, Version 1.0. – AidData, 2013

# Equipment to Kenya's national youth service

\$80,261,795.23 to Kenya in 2006

## Project Details:

**Donor:** [China](#)

**Recipient Countries:**

[Kenya](#) – 100%

**Commitment Year:** 2006

**Total Amount (USD-2009):** \$80,261,795.23

**CRS Sector:** [Other Social](#)

[infrastructure and services](#)

**Flow Type:** [Loan \(excluding debt rescheduling\)](#)

**Flow Class:** [Vague \(Official Finance\)](#)

(Arbitrated)

**Scope:** [Official finance](#)

**Verified:** [Checked](#)

Visible to [AidData users only](#):

**Robocoder says:** Industrial development (32120) ([Source](#))

## Description:

On January 29, 2010, Kenya's President Mwai Kibaki spoke at a ceremony for the arrival of equipment worth 4.3 billion KES for Kenya's National Youth Service purchased through the China Aviation Industry Corporation with a concessional loan from the Government of China. The equipment included road construction and earth moving equipment, agricultural machinery, fire fighting engines and generators, computers, radios, and other equipment. Negotiations for the equipment began in 2006. The terms of the loan and exact commitment date are unknown.

**Capacity:** capacity to establish three independent road and dam construction units capable of undertaking major development projects as well as respond adequately to public emergencies in the country

**Intent:** [Development](#)

**Status:** [Completed](#)

**Sector:** [Commerce](#)

**Debt Uncertain:** —

**Commercial:** —

**Line of Credit:** —

**Is Cofinanced:** —

Confirm

Source

<http://www.youtube.com/watch?feature>

Source URL

Message

This Youtube video demonstrates that this is a grant, rather than a loan.

Submit

Cancel

Challenge

Confirm

## Files:

 [AidData\\_China\\_1278\\_2627.html](#) [Delete](#)

 [AidData\\_China\\_1278\\_2626.html](#) [Delete](#)

Choose File

No file chosen

Add file

AidData users: manage these docs at [AidDataFS](#)

## Participating Organizations:

**Kenyan National Youth Service**

Role: [Accountable](#) Origin: [Recipient](#)

**Aviation Industry Corporation of China**

Role: [Implementing](#) Origin: [Donor](#)

## Contacts:

H.E. President Mwai Kibaki, CGH,  
MP

## Dates:

**Start (Planned):** —

**Start (Actual):** 29 January 2010

**End (Planned):** —

**End (Actual):** 29

January 2010

## Loan Details:

**Loan Type:** [Concessional](#)

**Interest Rate:** —

**Maturity:** —

**Grace Period:** —

**Grant Element:** —

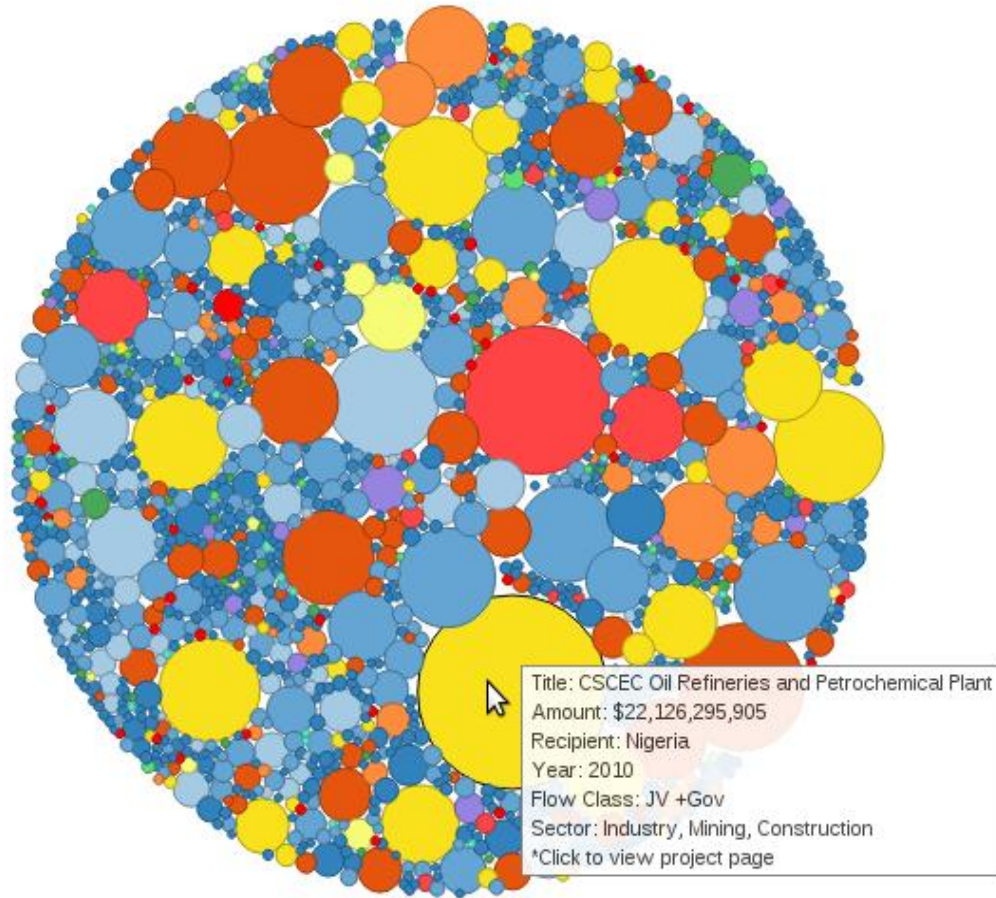


# The Known Universe of Chinese Official Finance to Africa

All Projects

Projects By Year

Projects By Flow Class



[china.aidata.org](http://china.aidata.org)

[www.aiddata.org](http://www.aiddata.org)