

FORMA

Forest Monitoring For Action

Rapid Identification of Pan-tropical Deforestation
Using Coarse-Resolution Data



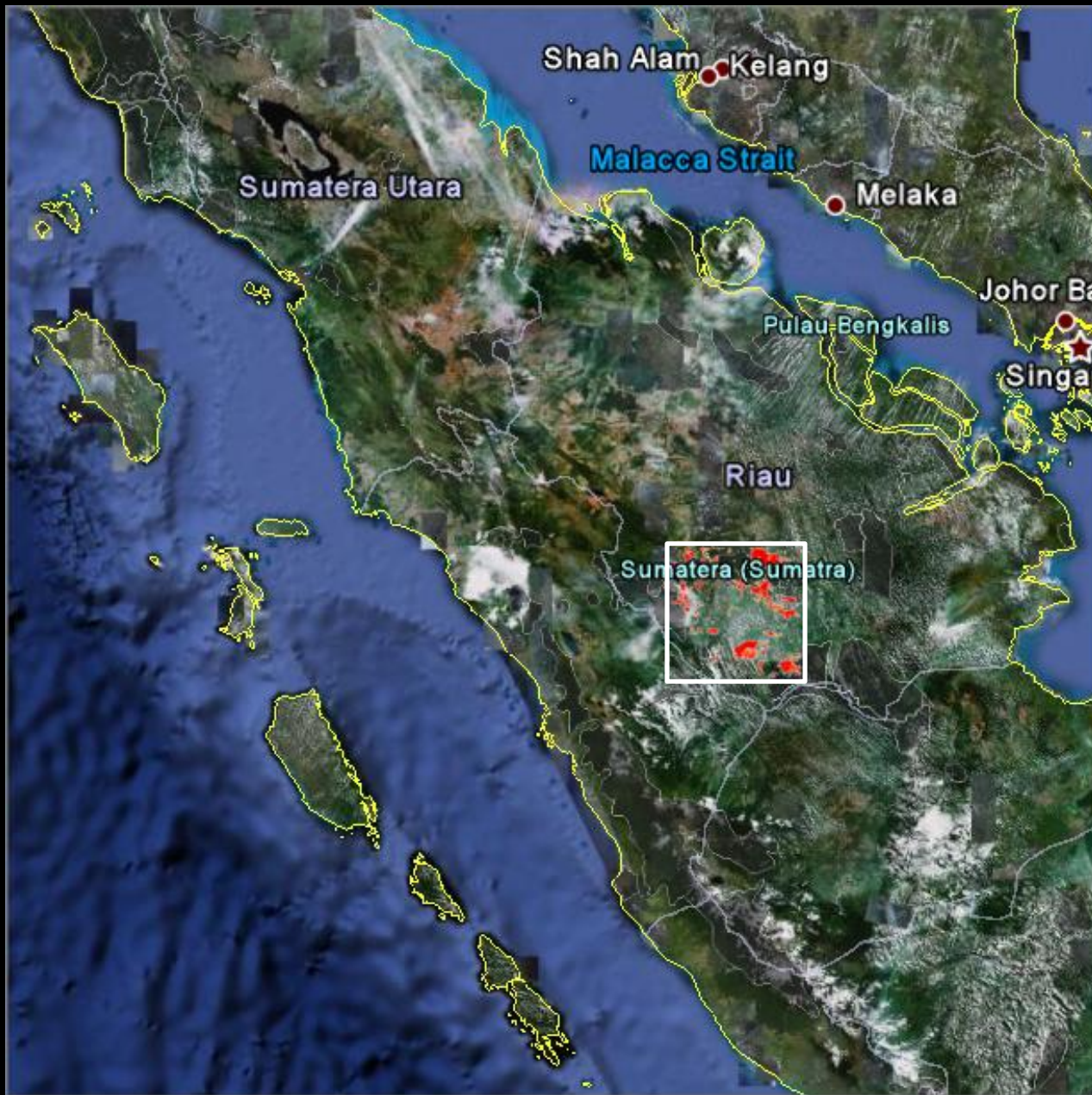
Senior researcher:
David Wheeler

Researchers:

Dan Hammer dhammer@cgdev.org Robin Kraft rkraft@cgdev.org



Foreign Ministry
of Denmark



Riau, Indonesia

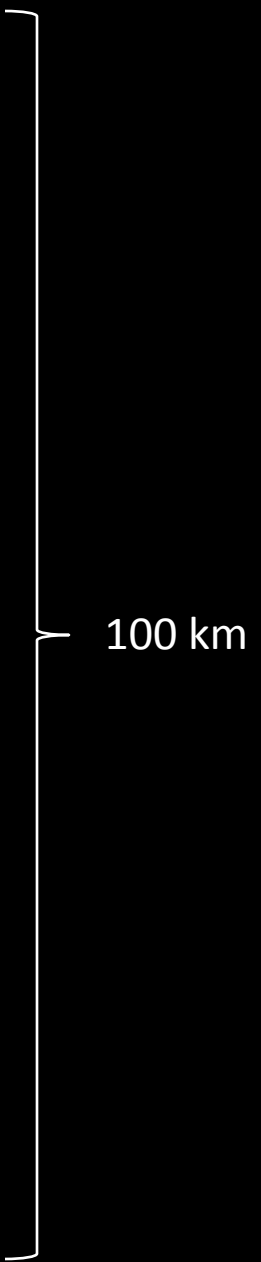
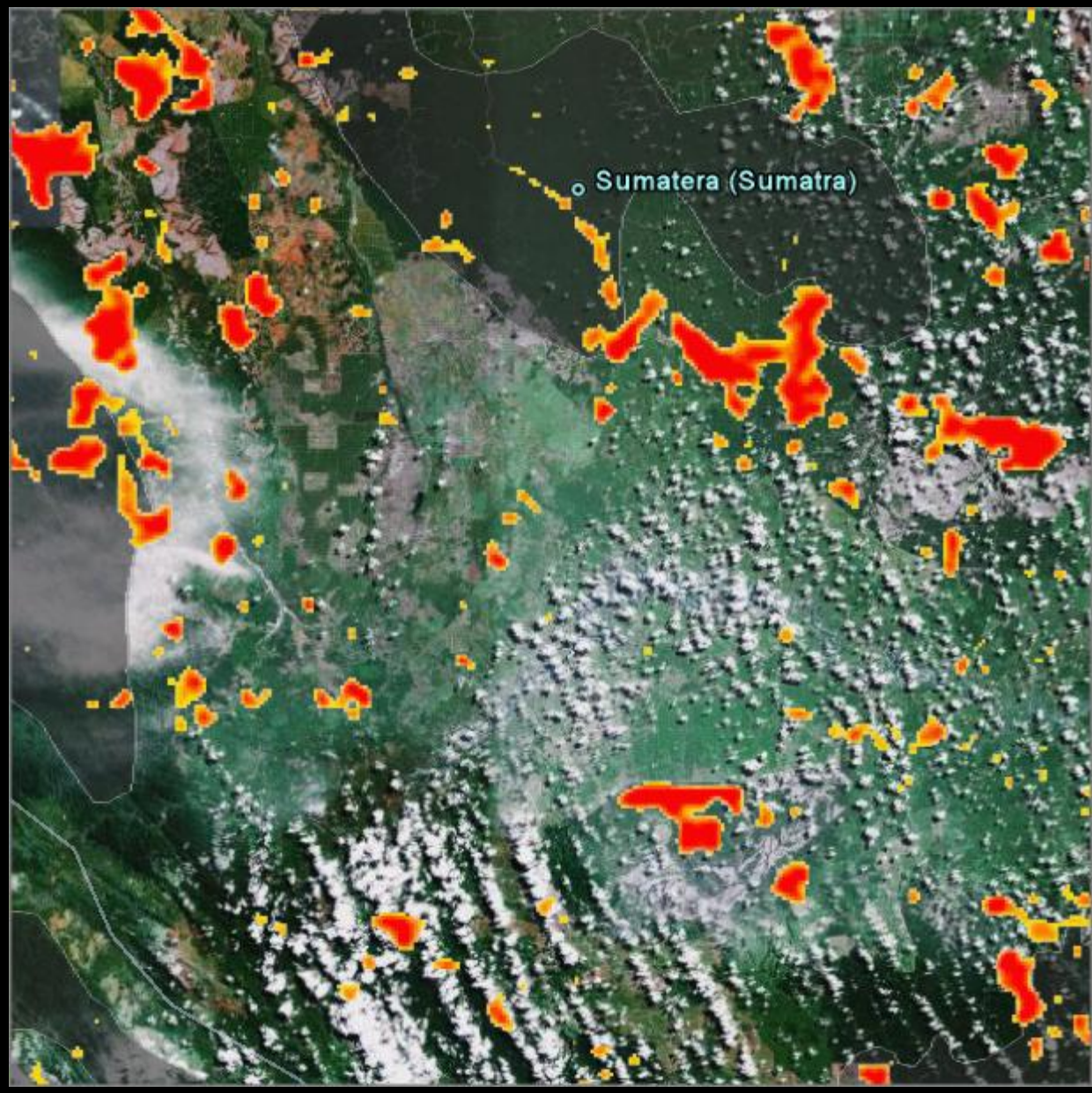
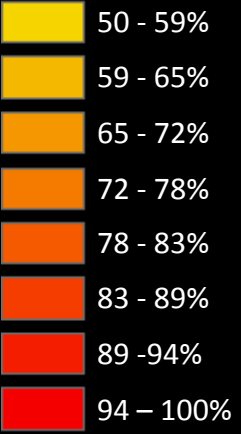
- 2005 Q1
- 2006 Q2
- 2007 Q3
- 2008 Q4

Through end of period

Protected area



Probability
deforested



Riau, Indonesia

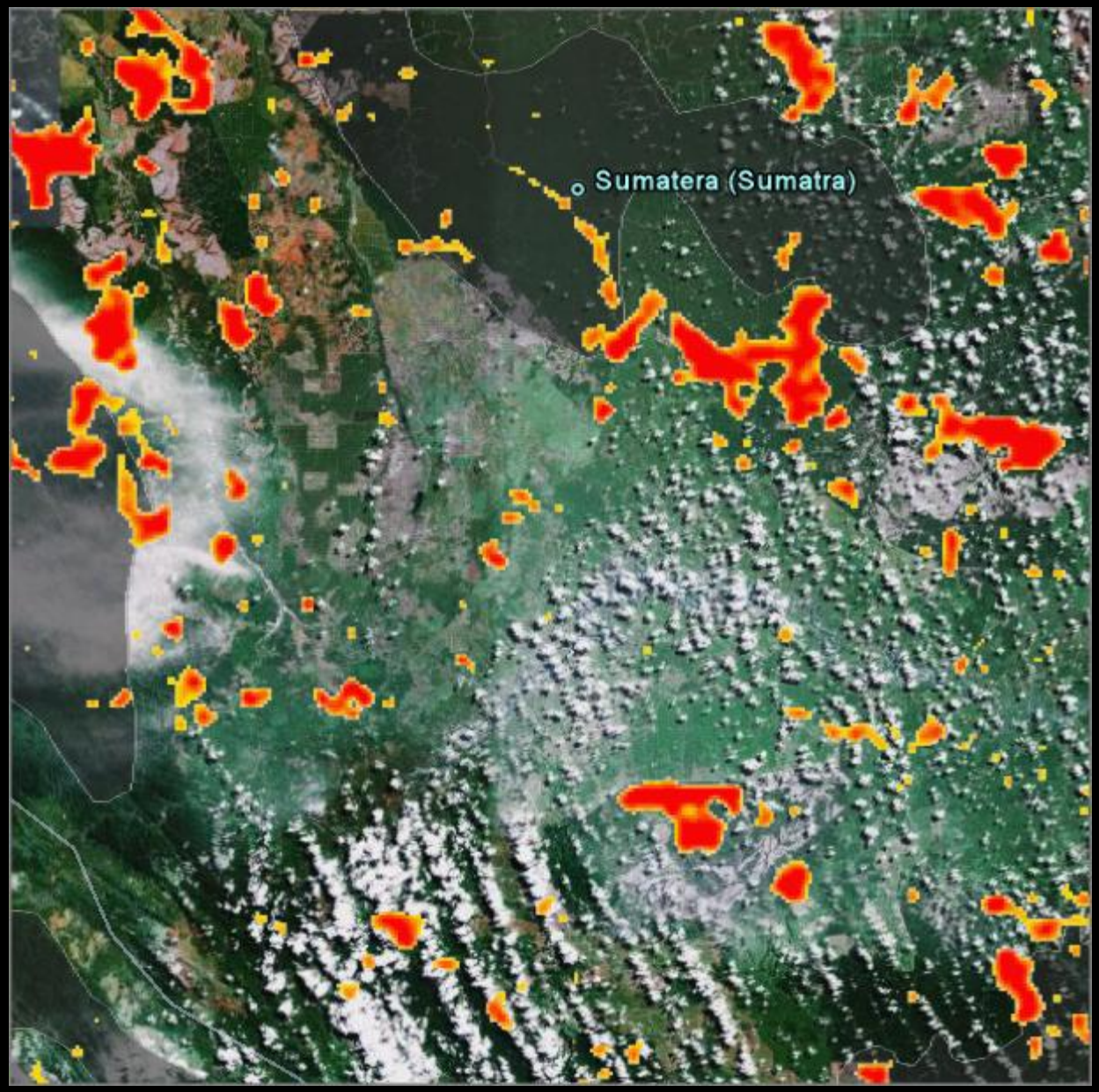
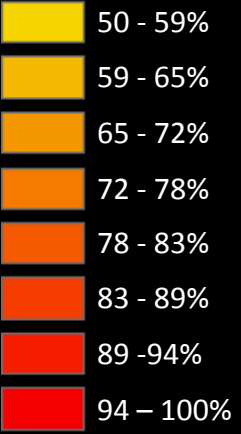
- 2005 Q1
- 2006 Q2
- 2007 Q3
- 2008 Q4

Through end of period

Protected area



Probability
deforested



100 km

Riau, Indonesia

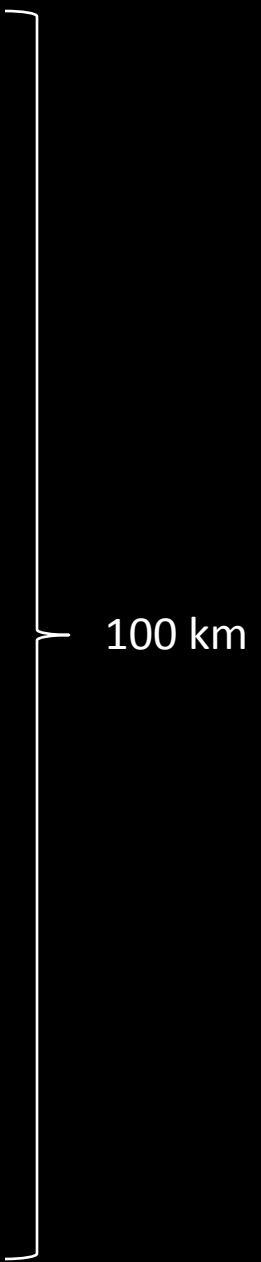
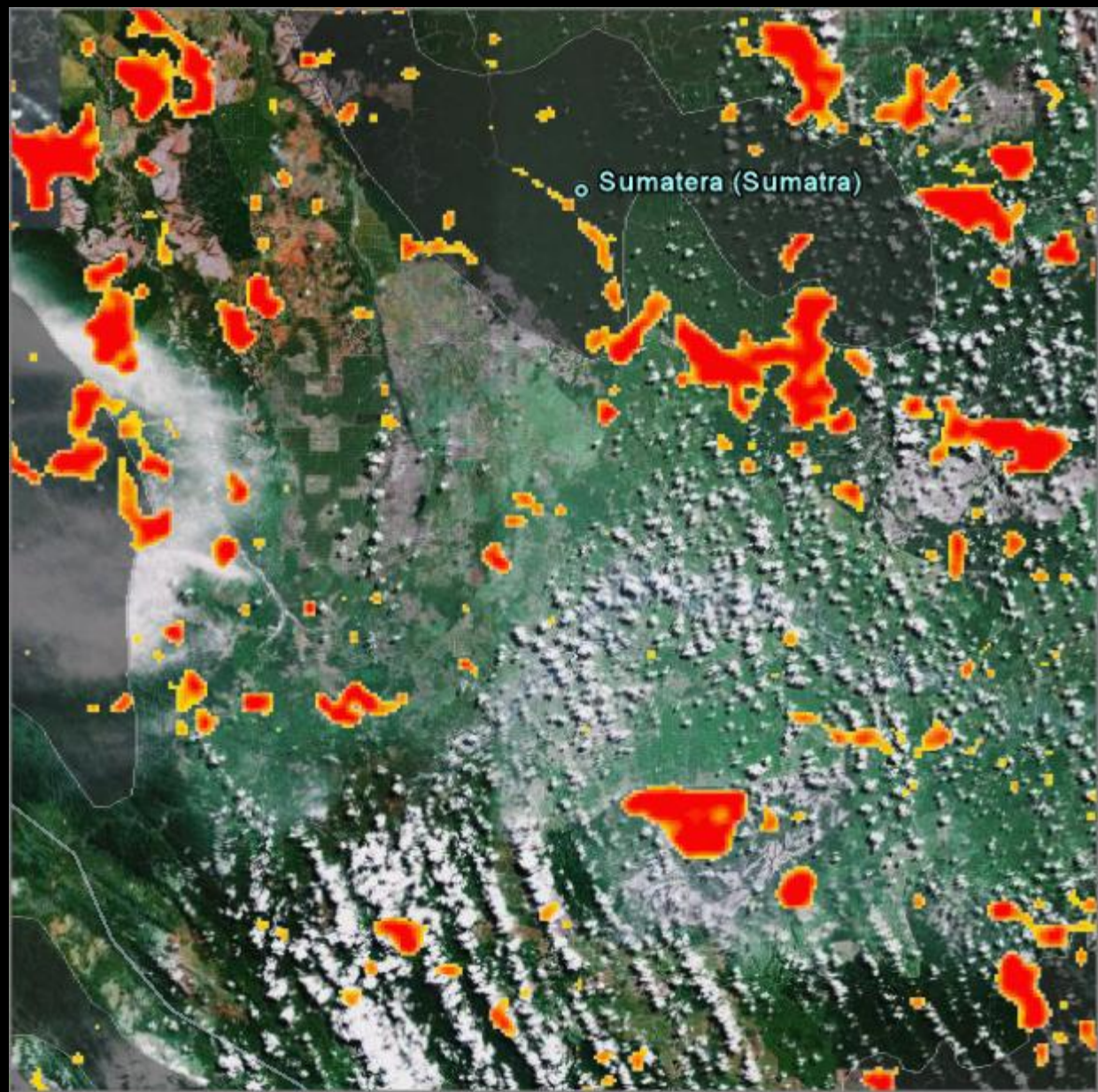
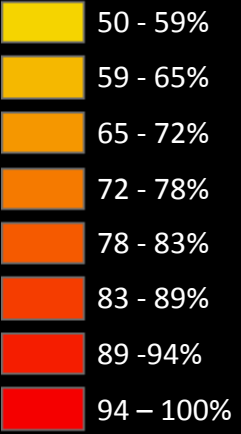
2005 Q1
2006 Q2
2007 Q3
2008 Q4

Through end of period

Protected area



Probability
deforested



Riau, Indonesia

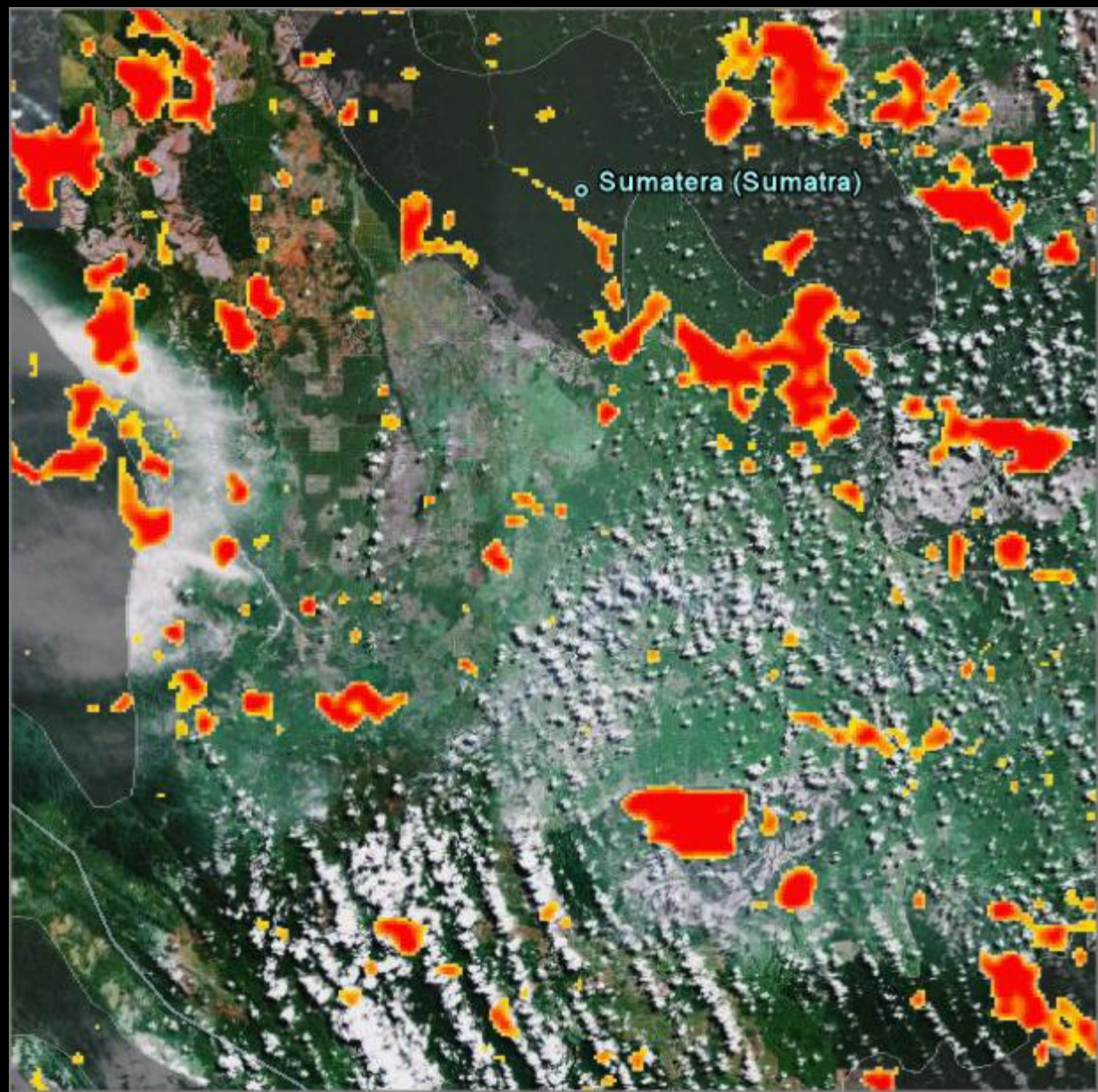
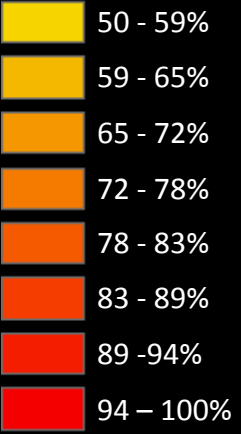
2005 Q1
2006 Q2
2007 Q3
2008 Q4

Through end of period

Protected area



Probability
deforested



100 km

Riau, Indonesia

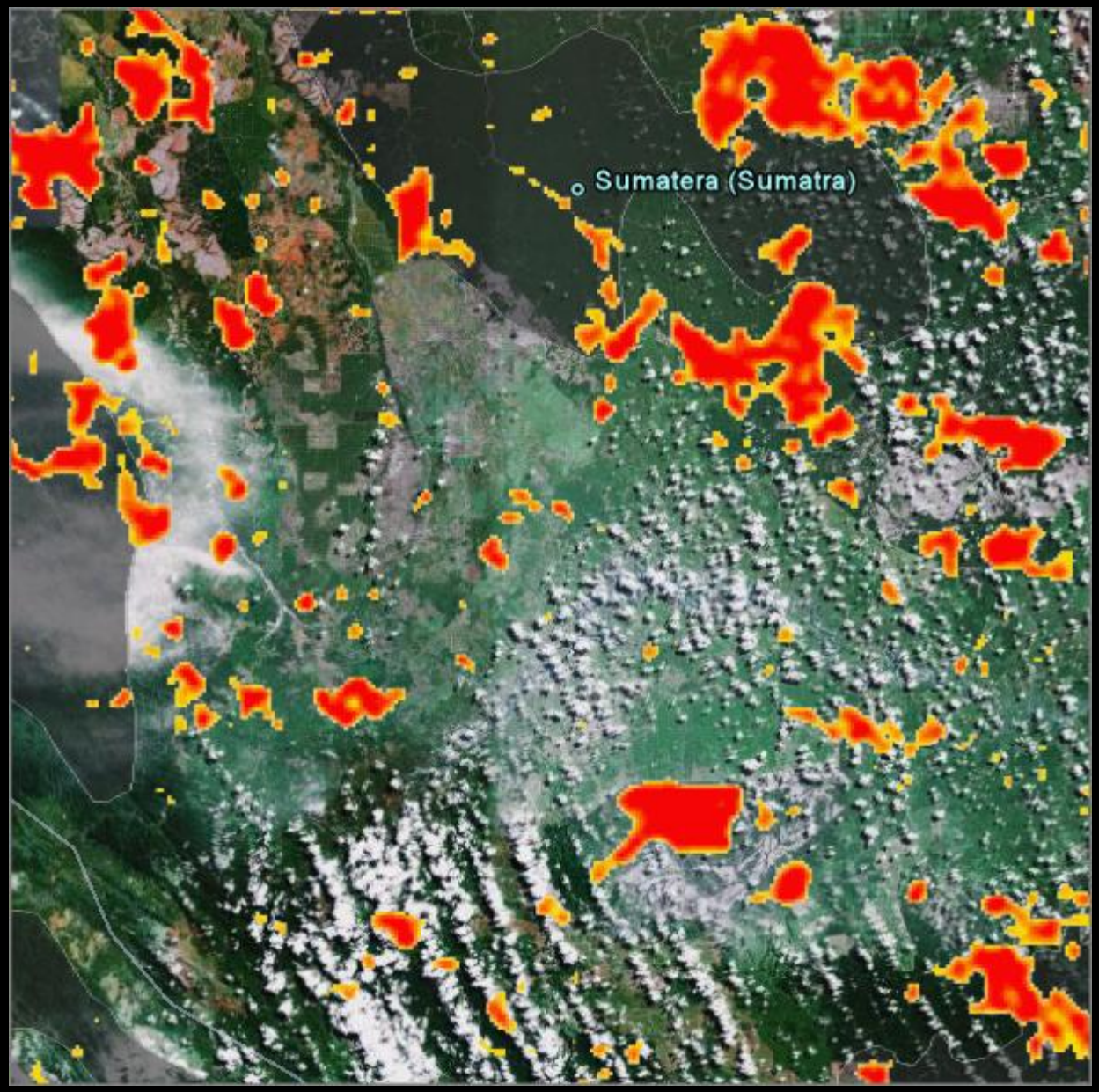
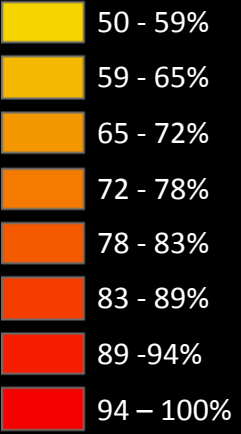
- 2005 Q1
- 2006 Q2
- 2007 Q3
- 2008 Q4

Through end of period

Protected area



Probability
deforested



100 km

Riau, Indonesia

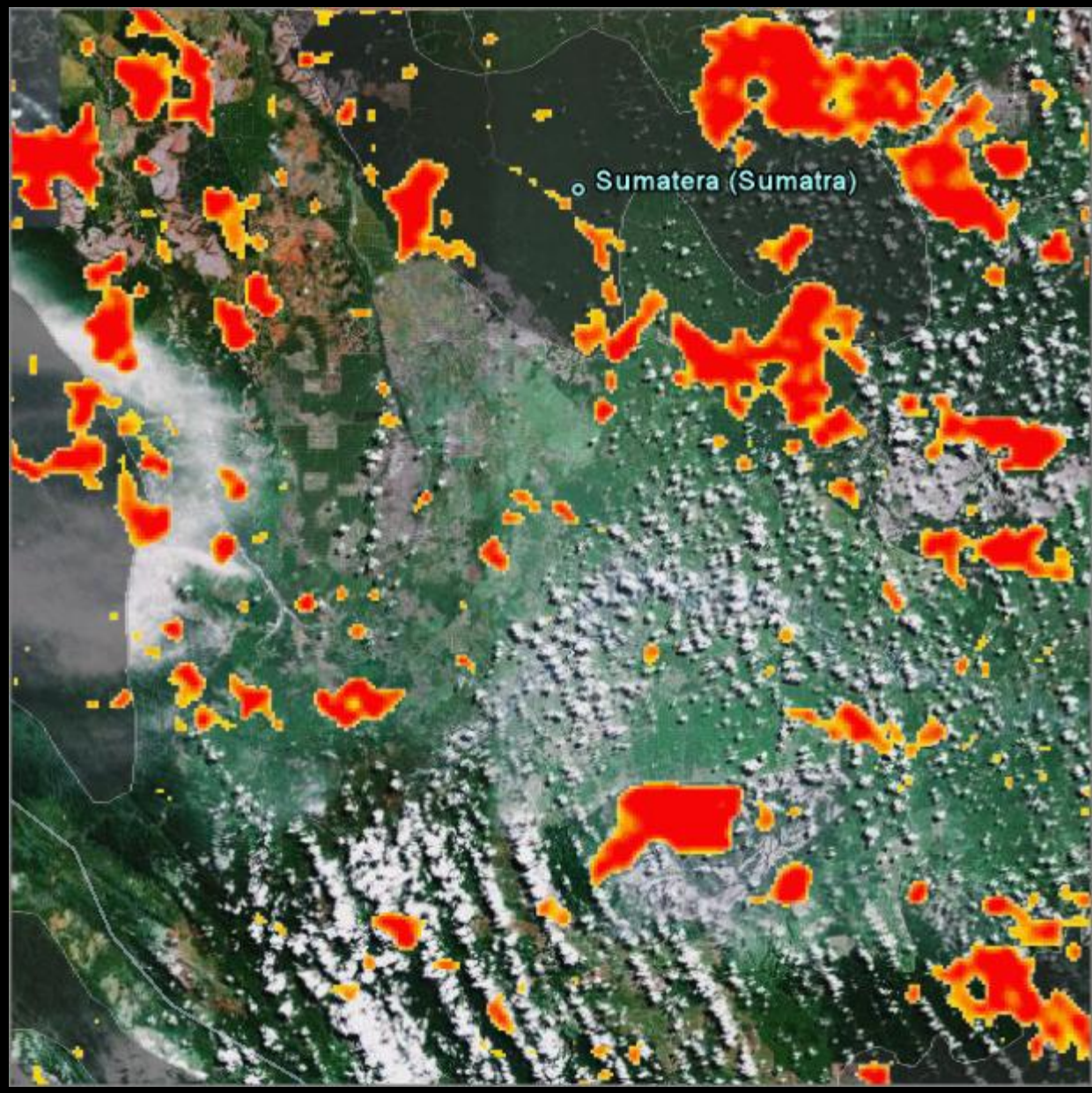
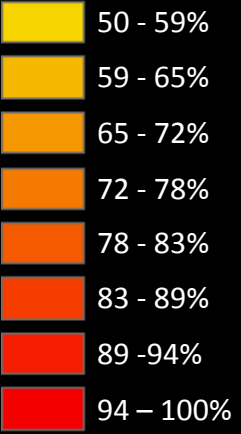
2005 Q1
2006 Q2
2007 Q3
2008 Q4

Through end of period

Protected area



Probability
deforested



100 km

Riau, Indonesia

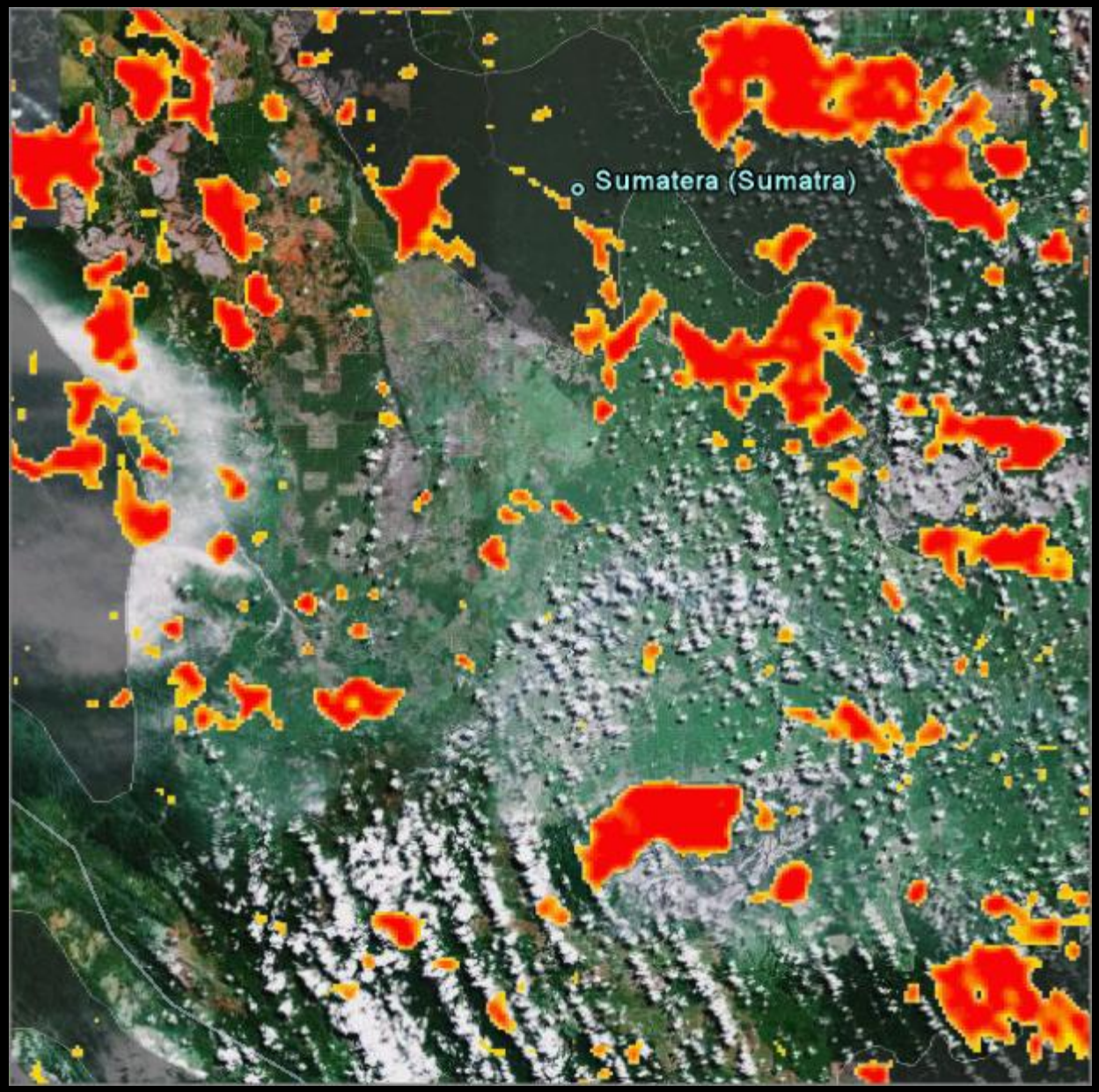
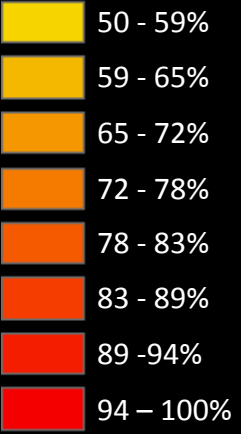
- 2005 Q1
- 2006 Q2
- 2007 Q3
- 2008 Q4

Through end of period

Protected area



Probability
deforested



100 km

Riau, Indonesia

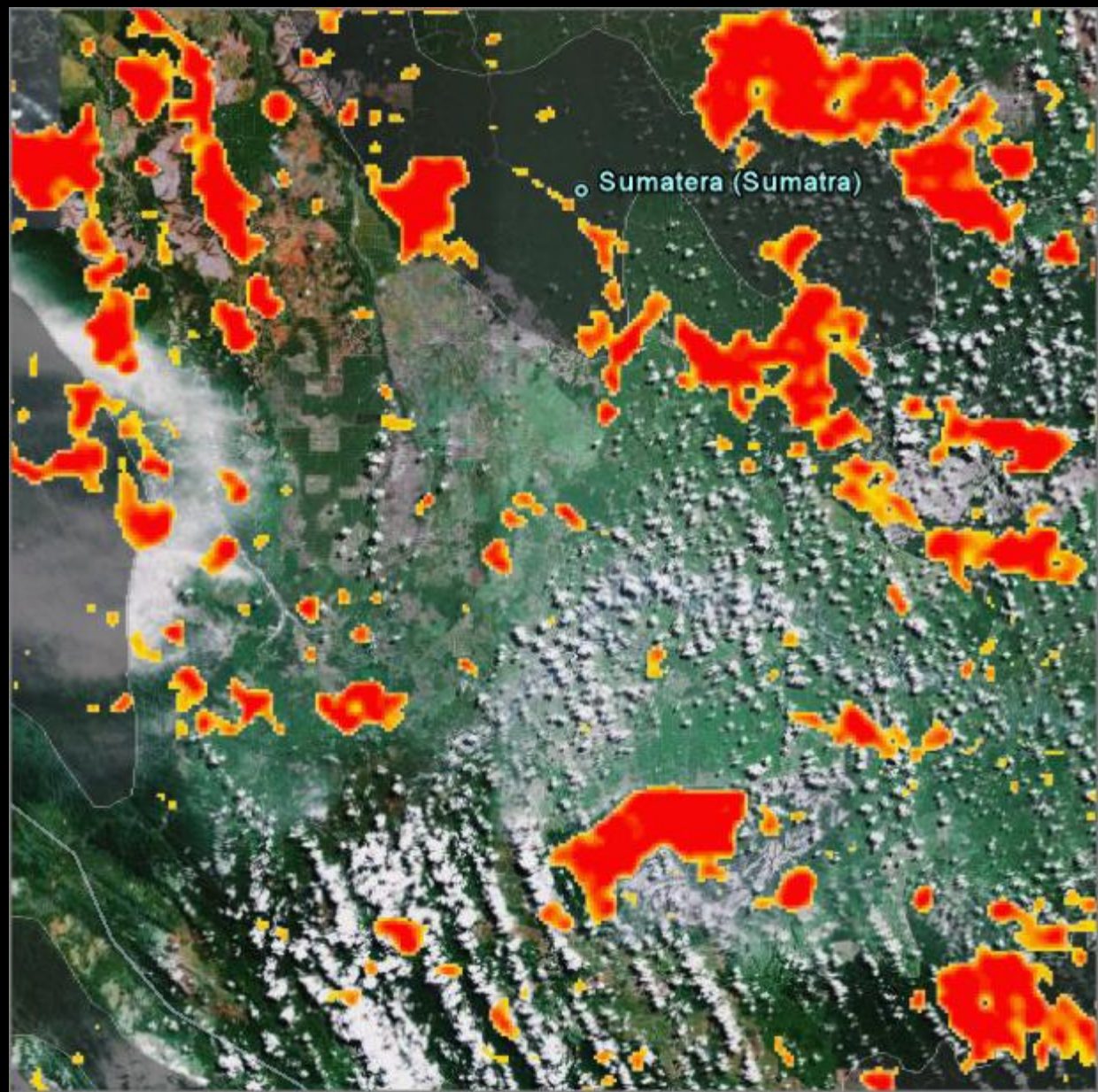
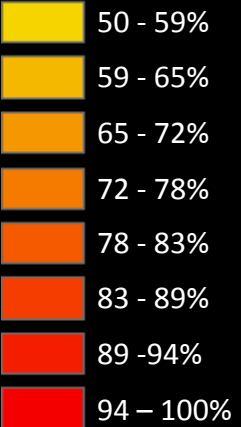
- 2005 Q1
- 2006 Q2
- 2007 Q3
- 2008 Q4

Through end of period

Protected area



Probability
deforested



100 km

Riau, Indonesia

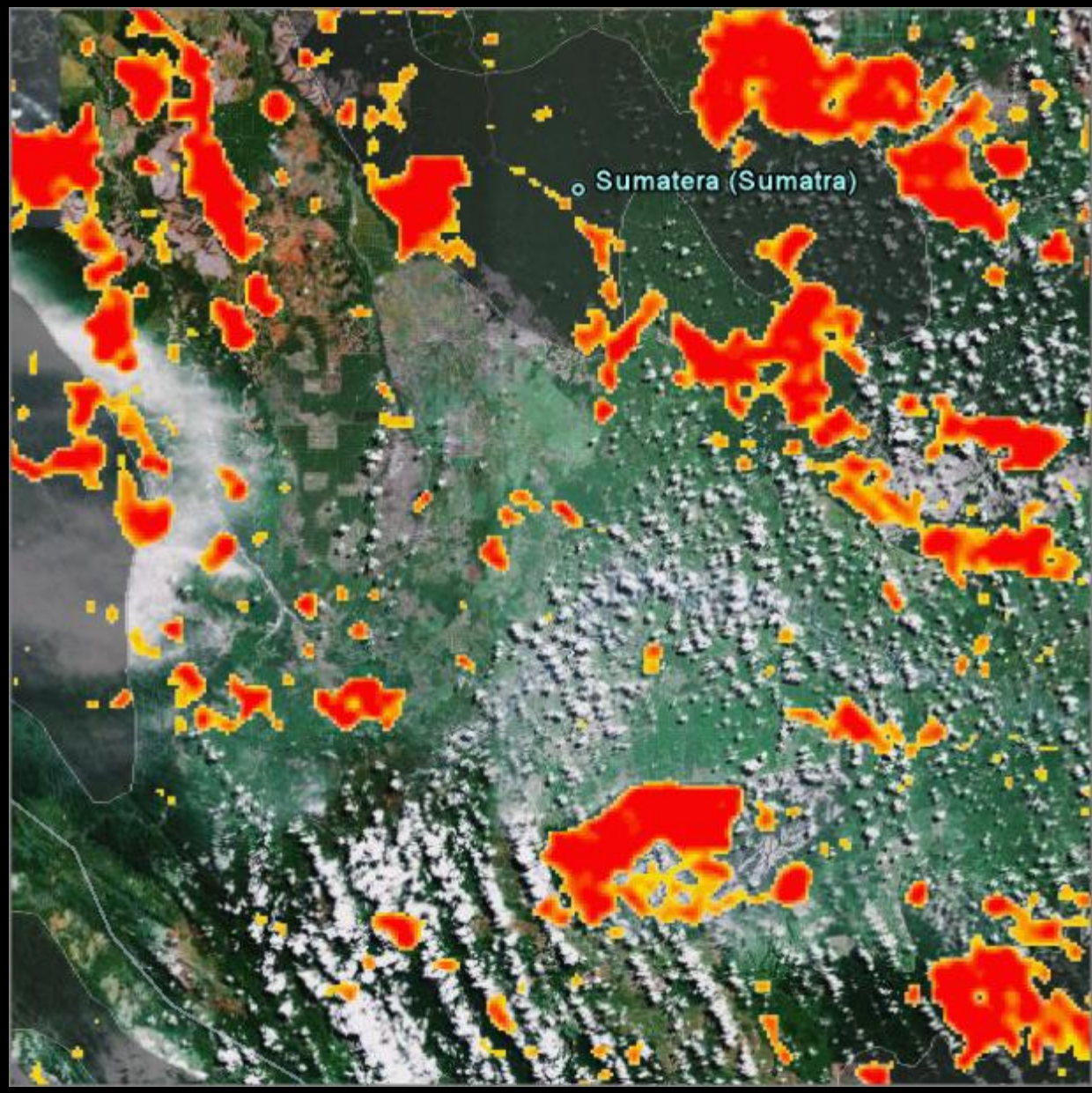
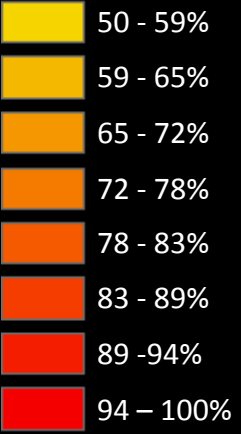
- 2005 Q1
- 2006 Q2
- 2007 Q3
- 2008 Q4

Through end of period

Protected area



Probability
deforested



100 km

Riau, Indonesia

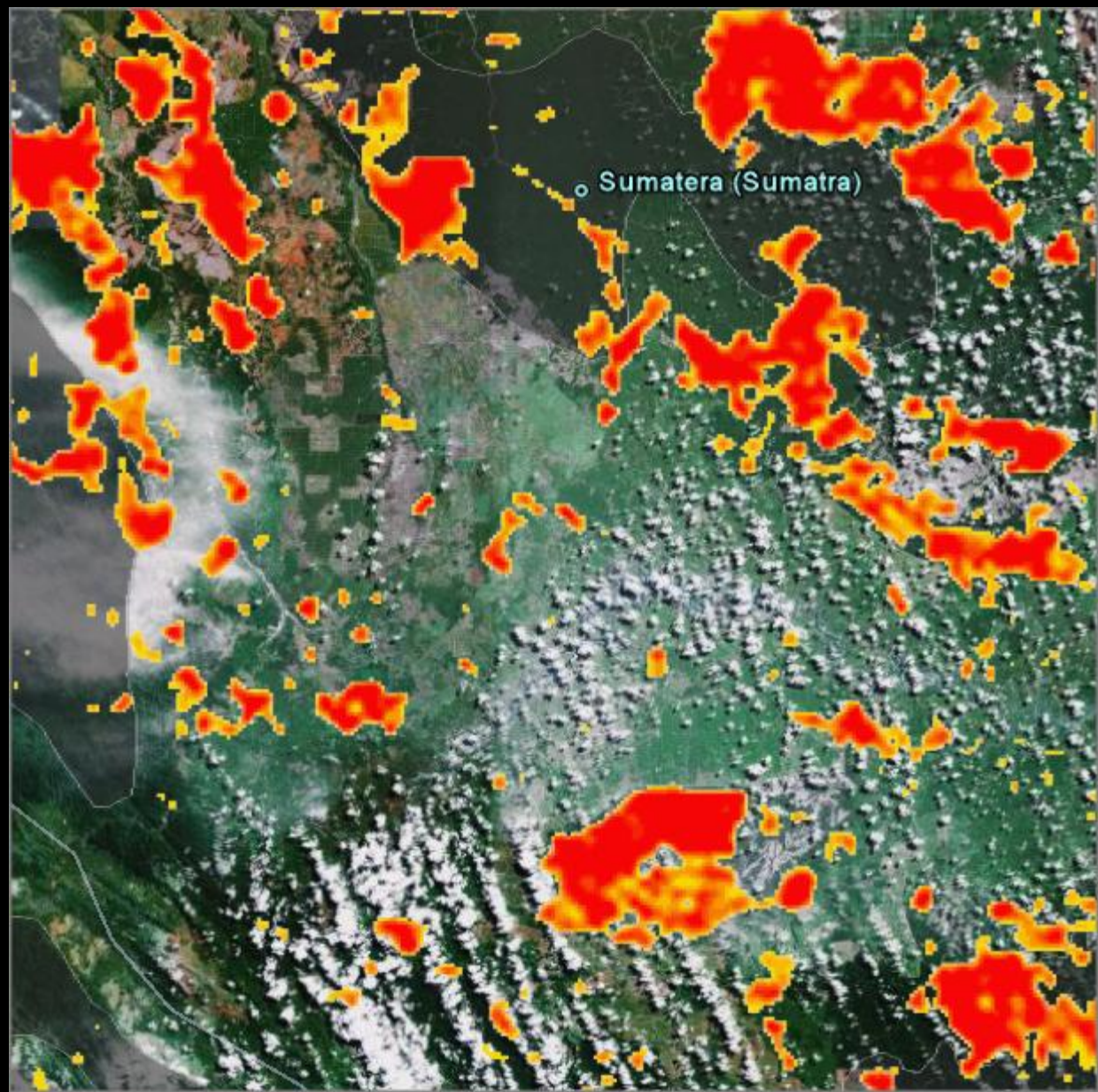
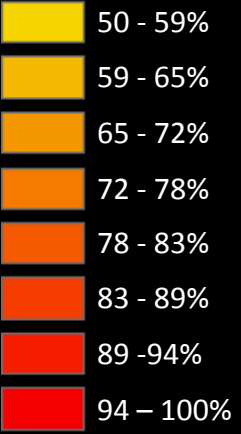
2005 Q1
2006 Q2
2007 Q3
2008 Q4

Through end of period

Protected area



Probability
deforested



100 km

Riau, Indonesia

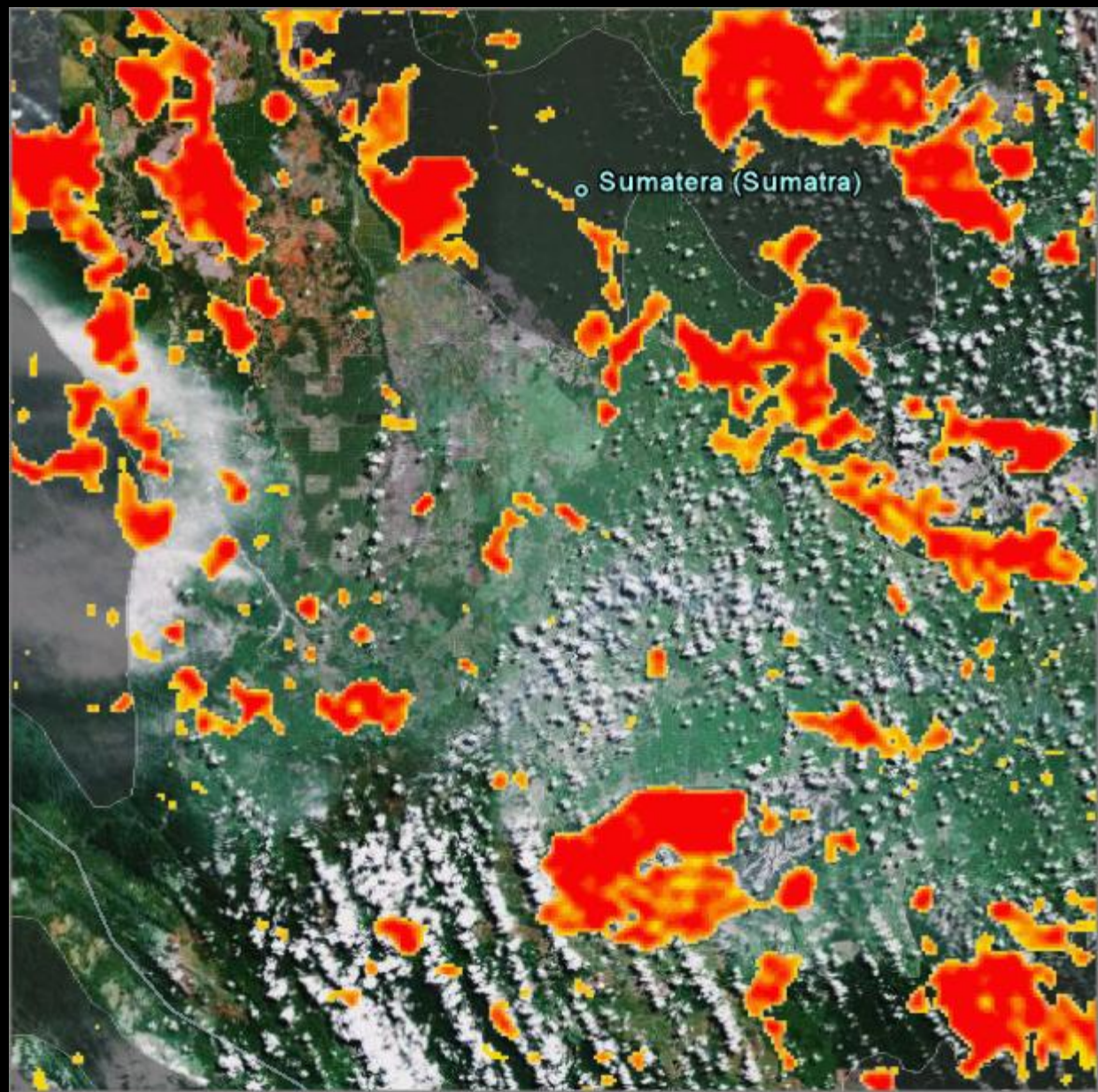
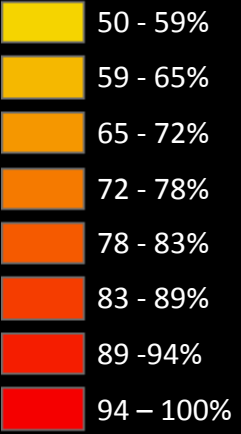
2005 Q1
2006 Q2
2007 Q3
2008 Q4

Through end of period

Protected area



Probability
deforested



100 km

Riau, Indonesia

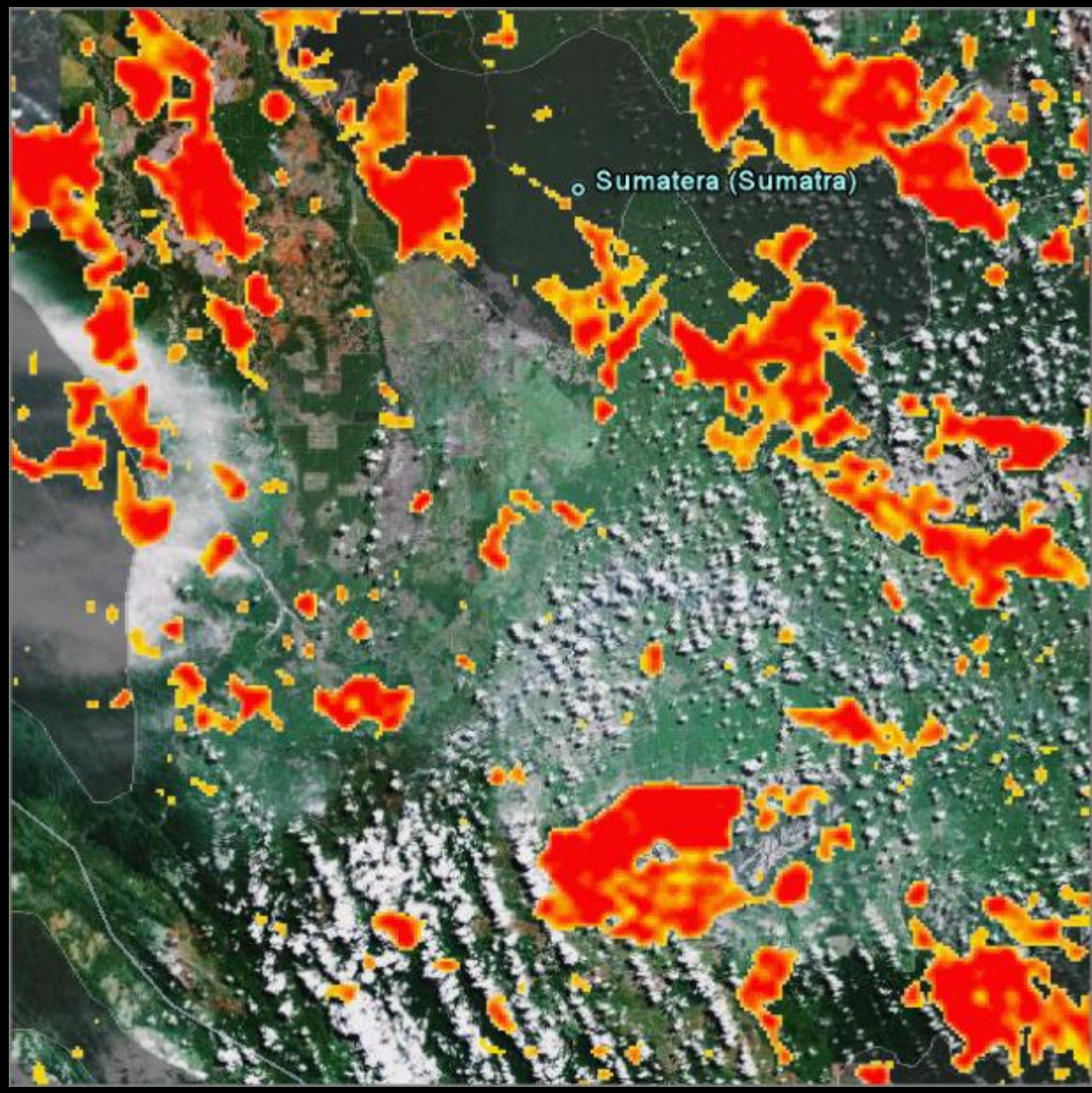
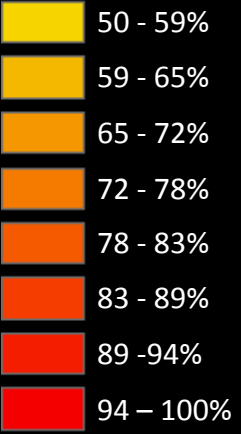
- 2005 Q1
- 2006 Q2
- 2007 Q3
- 2008 Q4

Through end of period

Protected area



Probability
deforested



100 km

Riau, Indonesia

2005 Q1
2006 Q2
2007 Q3
2008 Q4
Through end of period

Protected area