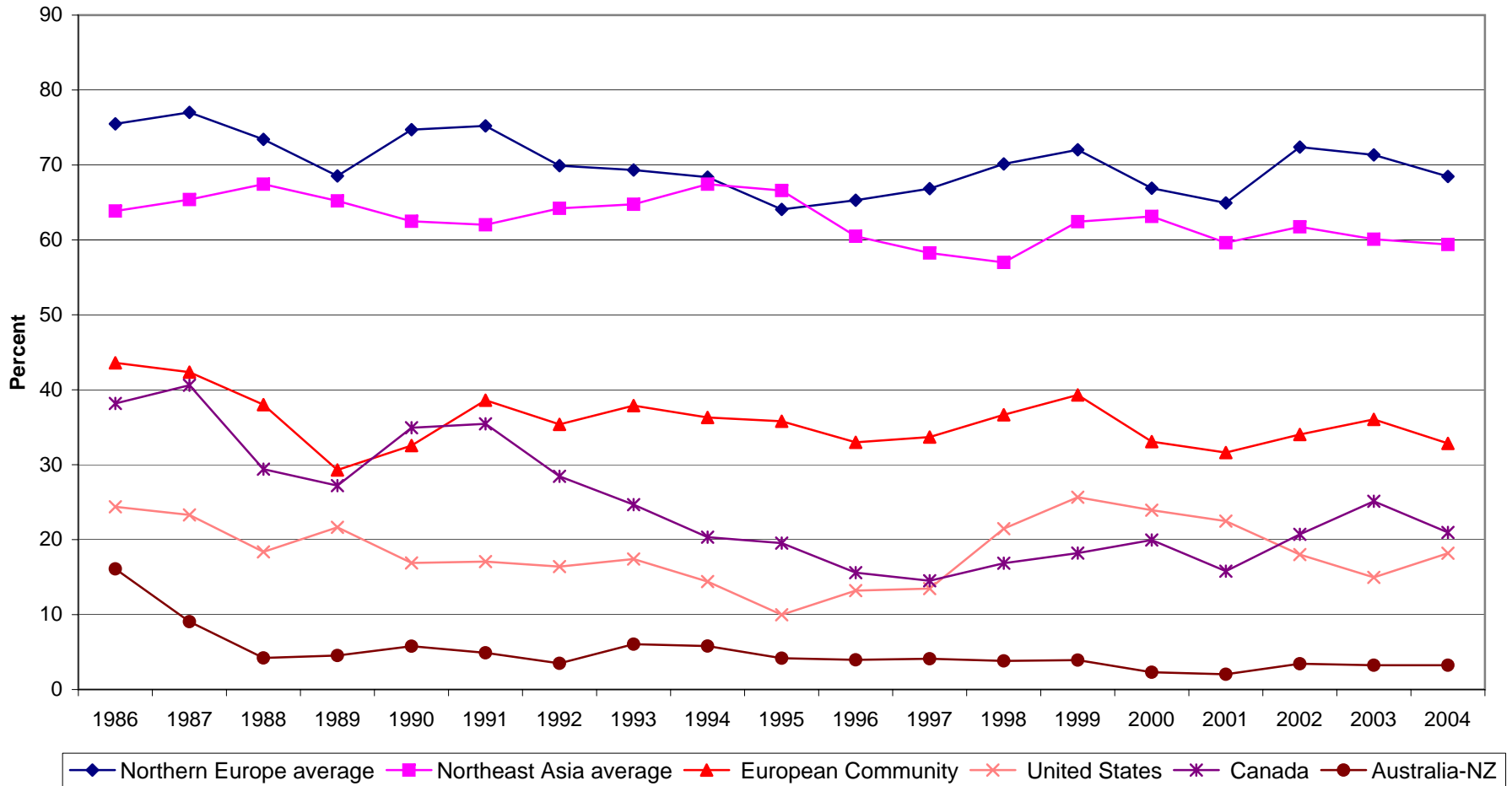


OECD Producer Support Estimates as Percent of Gross Farm Receipts



NB: EU-12 for 1986-1994, EU-15 from 1995; EU includes ex-GDR from 1990; Austria, Finland, Sweden are included in OECD totals for all years and in EU from 1995. Adapted from Elliott, *Delivering on Doha: Farm Trade and the Poor*.