



**POPULATION  
COUNCIL**

Ideas. Evidence. Impact.

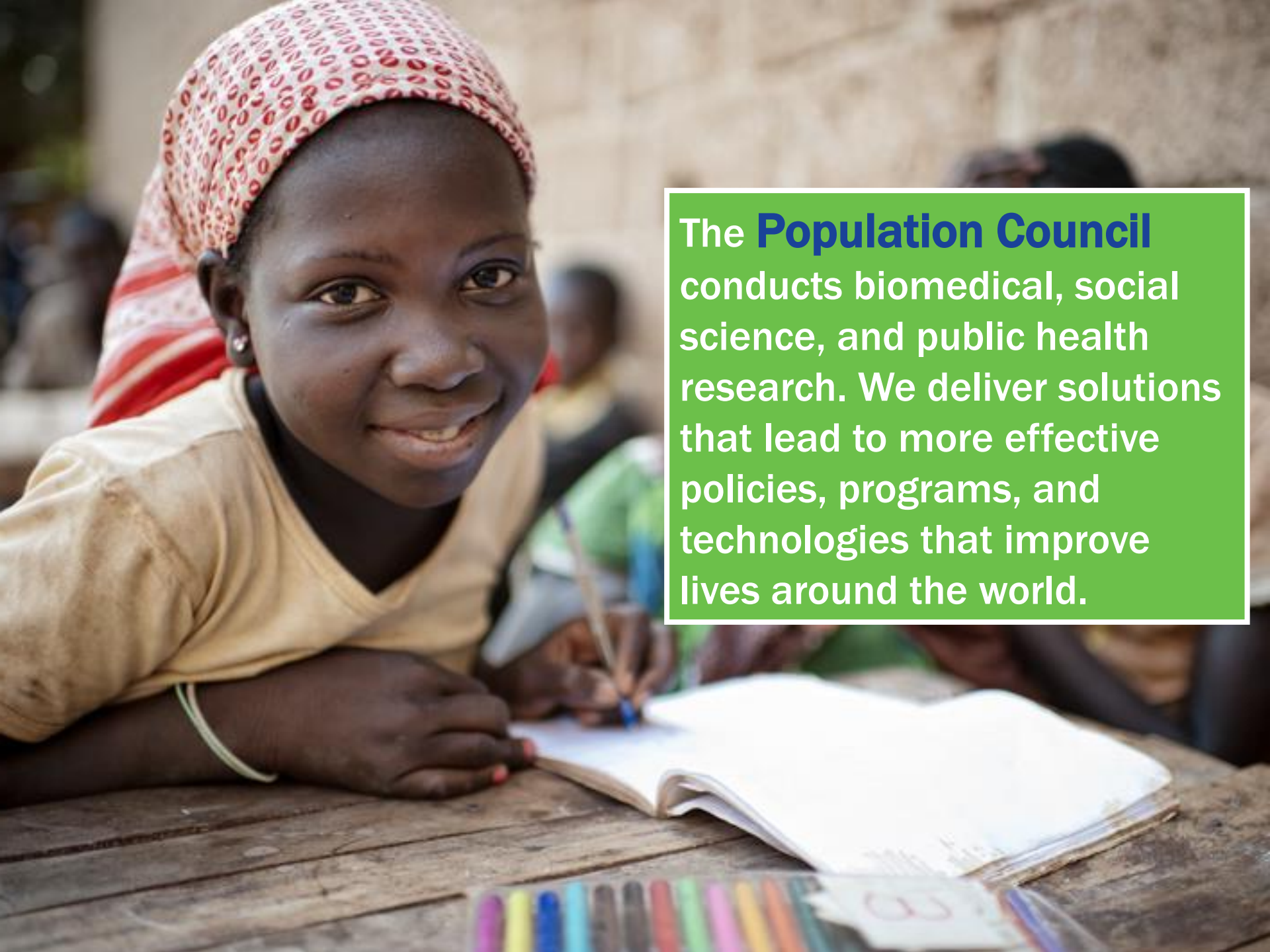
---

# USING IMPLEMENTATION SCIENCE TO STRENGTHEN HIV PREVENTION FOR ADOLESCENT GIRLS AND YOUNG WOMEN

Sanyukta Mathur, DrPH MHS

Project Director, DREAMS Implementation Science  
Research

June 1, 2018, Center for Global Development



The **Population Council** conducts biomedical, social science, and public health research. We deliver solutions that lead to more effective policies, programs, and technologies that improve lives around the world.

# Generating evidence around DREAMS

- 3 cross-cutting themes—focusing on unique features of DREAMS



Assessing effectiveness of community-based **girl-centered programming**



Identifying and reaching male partners of adolescent girls and young women in HIV services



Introducing **oral PrEP** among adolescent girls and young women

**Funding support from the Bill & Melinda Gates Foundation, PEPFAR and USAID Malawi through Project SOAR**

# Implementation science research sites

10 research activities across 7 DREAMS countries

Uganda

Male Partner  
PrEP (TA)

Kenya

AGYW

Tanzania

PrEP

Malawi

AGYW  
Male Partner

Zambia

AGYW

Swaziland

Male Partner

South Africa

Male Partner  
AGYW (TA)

# Research approach

2-phased study design



Mixed methods



Multiple perspectives



Engaging stakeholders



# DREAMS is reaching many at-risk AGYW

- **Vulnerable households**
  - ✓ Experienced parental loss
- **Increased biological vulnerability**
  - ✓ High STI experience
- **High-risk sexual behaviors**
  - ✓ Multiple partnerships
  - ✓ Don't use condoms consistently
  - ✓ Use alcohol before sex
- **High-risk sexual relationships**
  - ✓ Experienced sexual violence in the last 12 months
  - ✓ Partners have other partners (partner sexual concurrency)

# Some sub-populations of AGYW not as well represented

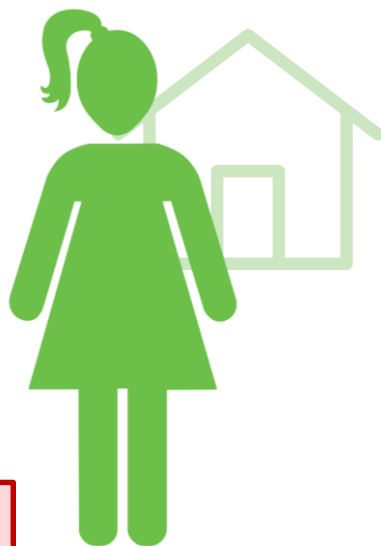
- Out of school
- Sexually active

	Zambia		Kenya	
	DREAMS	Non-DREAMS	DREAMS	Non-DREAMS
Currently in school	71%	37%	58%	27%
Sexually active	41%	66%	62%	78%

# Vulnerability profiles of AGYW, Kisumu, Kenya

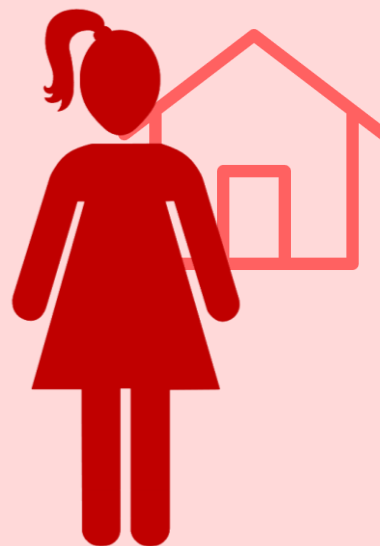
Preliminary findings from latent class analysis using survey data (n=1.014)

Non-orphan  
Connected to adult in HH  
Comprehensive knowledge of HIV



OUT-OF-SCHOOL  
LOWER  
VULNERABILITY  
71% of sample

AGYW with higher vulnerability were more likely to report sexual risk behaviors



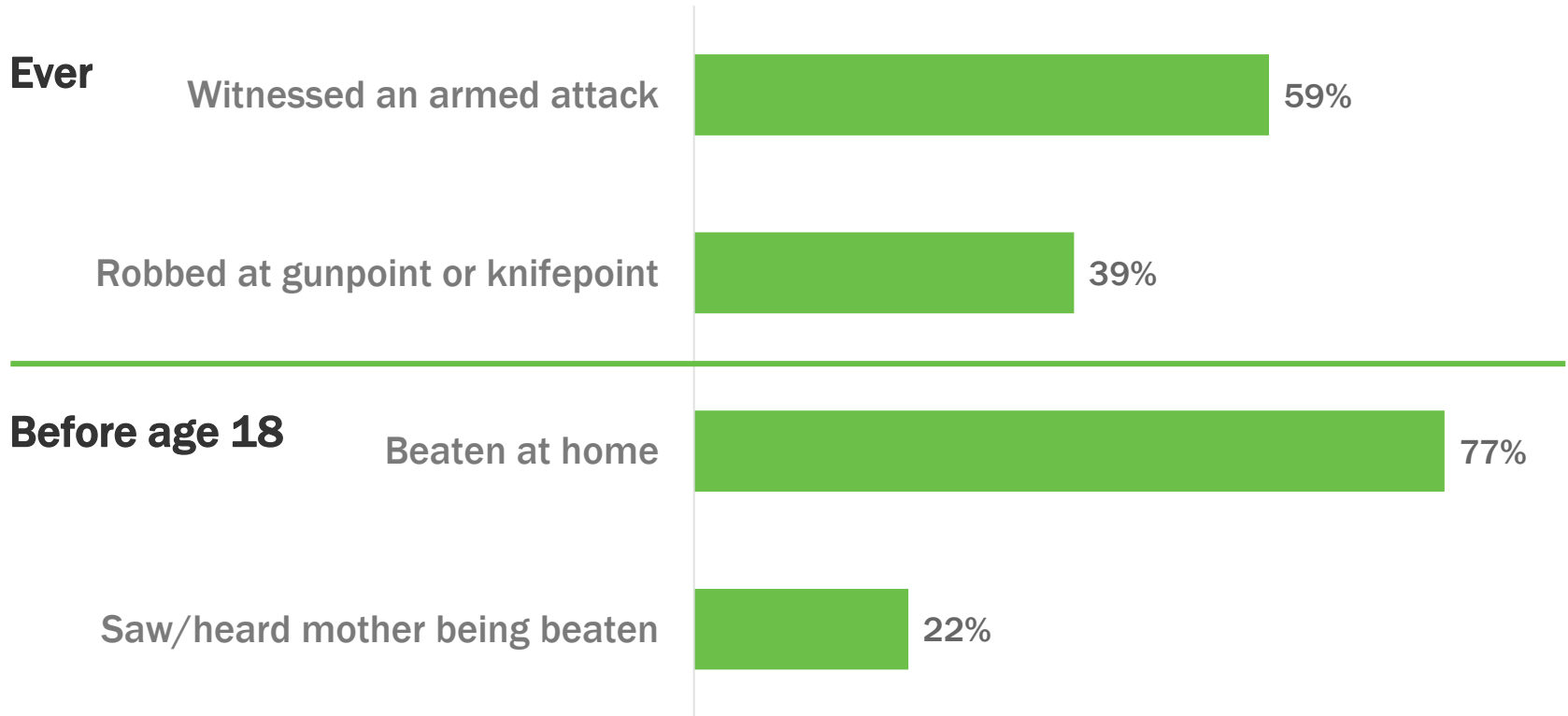
OUT-OF-SCHOOL  
HIGHER  
VULNERABILITY  
29% of sample

Double orphan  
Sometimes hungry  
Not connected to adult in HH  
Sexual debut  $\leq 14$   
Moderate HIV risk perception  
High gender inequity  
No comprehensive knowledge of HIV



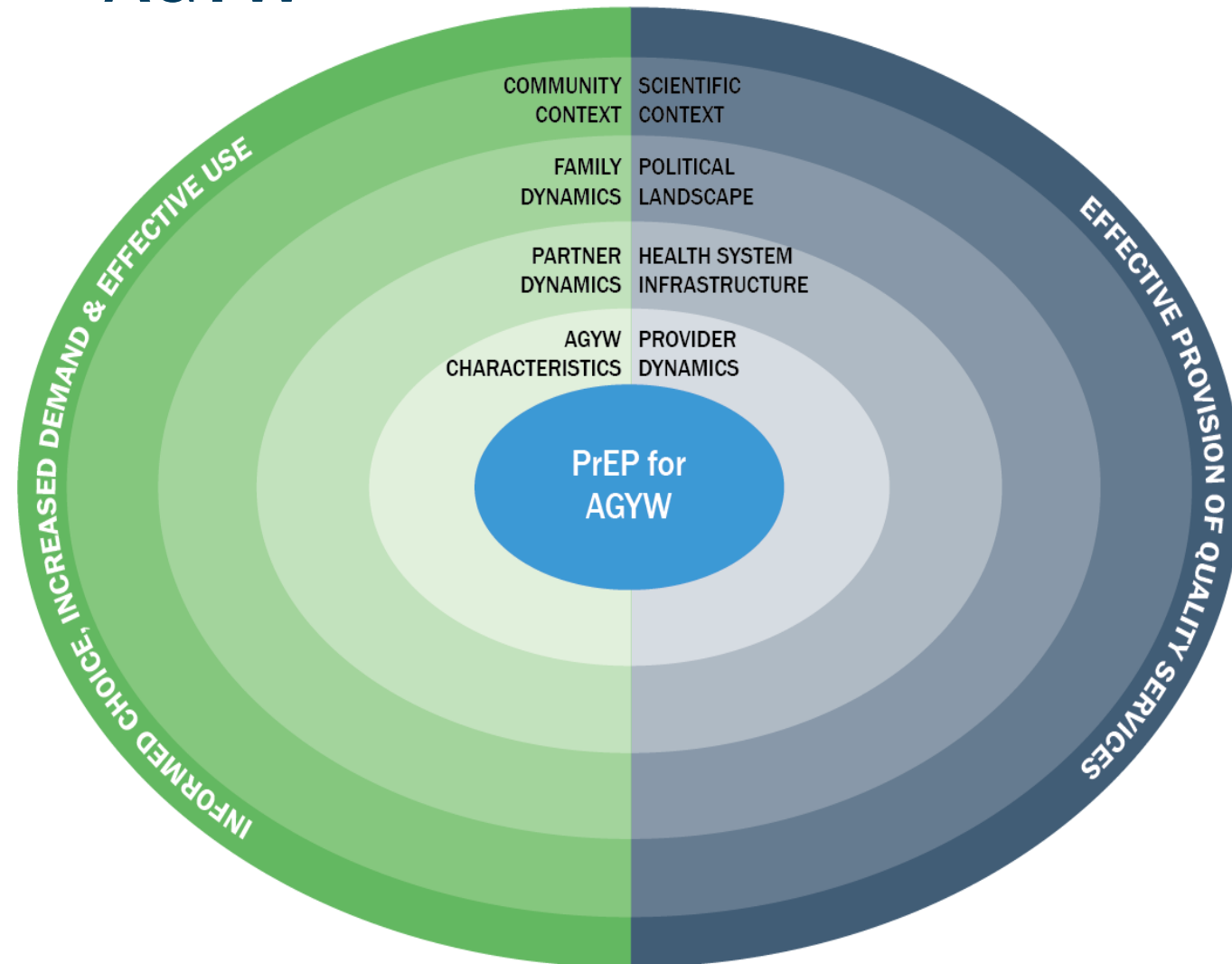


# Men's history of trauma & HIV risk for AGYW



- Adult experiences of violence associated with multiple sexual partners ( $p=0.001$ )
- Childhood experiences of violence associated with multiple sexual partners in the last year and inconsistent condom use (both  $p<0.05$ )

# Expanding the HIV prevention package for AGYW

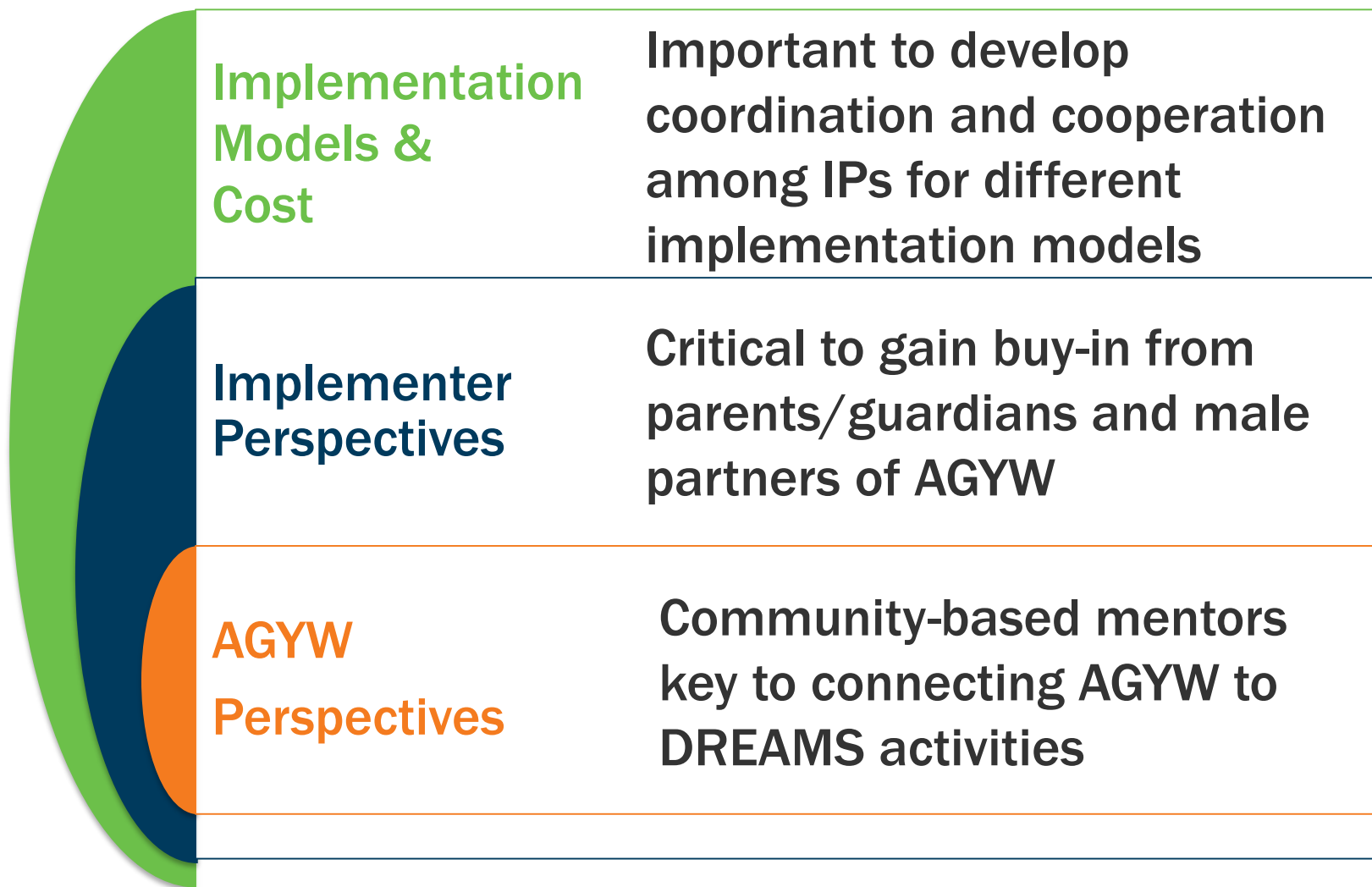


High congruence among respondents: AGYW need PrEP due to sociocultural circumstances that increase their HIV risk

Study site: Tanzania

Mathur, Pilgrim, and Pulerwitz. 2016. "PrEP introduction for adolescent girls & young women," *The Lancet HIV* 3(9): e406-e408.

# Facilitators to program implementation



# Key IS takeaways to-date



Identify context-specific vulnerability profiles to inform more targeted outreach and programming.



Target programs toward men to address their high-risk behaviors and vulnerabilities to reduce risk for AGYW.



Engage AGYW and key actors to support HIV prevention & introduction of oral PrEP for AGYW.



Strengthen systems and support capacity of implementing partners to enhance comprehensive prevention for AGYW.

# IS research team

## Council staff:

- Sanyukta Mathur,  
Project Director  
[smathur@popcouncil.org](mailto:smathur@popcouncil.org)
- Julie Pulerwitz
- Nanlesta Pilgrim
- Ann Gottert
- Jerry Okal, Kenya
- Lyson Tenthani, Malawi
- Mike Mbizvo, Zambia
- Maurice Musheke, Zambia
- Lou Apicella, Tanzania

- Nrupa Jani
- Pamela Keilig
- Craig Heck
- Ellen Weiss
- Sherry Hutchinson

## Local research partners:

- Epicentre, South Africa
- CHDC, Uganda
- IHM, Swaziland
- COM, Malawi



**POPULATION  
COUNCIL**

Ideas. Evidence. Impact.

# **DREAMS IMPLEMENTATION SCIENCE RESEARCH**

**Evidence to Support HIV Prevention for  
Adolescent Girls and Young Women**

[popcouncil.org/DREAMS\\_IS](http://popcouncil.org/DREAMS_IS)